

# FOXP3<sup>+</sup>CD4<sup>+</sup>CD25<sup>+</sup> Adaptive Regulatory T Cells Express Cyclooxygenase-2 and Suppress Effector T Cells by a Prostaglandin E<sub>2</sub>-Dependent Mechanism<sup>1</sup>

Milada Mahic,\* Sheraz Yaqub,\* C. Christian Johansson,<sup>2\*</sup> Kjetil Taskén,<sup>3\*</sup> and Einar M. Aandahl\*<sup>†</sup>

CD4<sup>+</sup>CD25<sup>+</sup> regulatory T (T<sub>R</sub>) cells suppress effector T cells by partly unknown mechanisms. In this study, we describe a population of human suppressive CD4<sup>+</sup>CD25<sup>+</sup> adaptive T<sub>R</sub> (T<sub>R</sub><sup>adapt</sup>) cells induced in vitro that express cyclooxygenase 2 (COX-2) and the transcription factor FOXP3. T<sub>R</sub><sup>adapt</sup> cells produce PGE<sub>2</sub> and suppress effector T cell responses in a manner that is reversed by COX inhibitors and PGE<sub>2</sub> receptor-specific antagonists. In resting CD4<sup>+</sup>CD25<sup>-</sup> T cells, treatment with PGE<sub>2</sub> induced FOXP3 expression. Thus, autocrine and paracrine effects of PGE<sub>2</sub> produced by COX-2-positive T<sub>R</sub><sup>adapt</sup> cells may be responsible for both the FOXP3<sup>+</sup> phenotype and the mechanism used by these cells to suppress effector T cells. *The Journal of Immunology*, 2006, 177: 246–254.

The CD4<sup>+</sup>CD25<sup>+</sup> regulatory T (T<sub>R</sub>)<sup>4</sup> cells are a unique population of T cells that maintain peripheral immune tolerance and inhibit autoreactive T cells (1–3). Although T cells with regulatory or suppressive properties are not strictly confined to the CD4<sup>+</sup>CD25<sup>+</sup> T cell compartment, T<sub>R</sub> cells are now well characterized in both mice and humans and play an important role in various clinical conditions. T<sub>R</sub> cells inhibit alloreactive T cells and suppress transplant rejection reactions, and the role of T<sub>R</sub> cells in cancer and chronic infectious diseases is a subject of intense investigation (4). Through in vitro experiments, T<sub>R</sub> cells are shown to effectively inhibit effector T cell responses such as cytokine production and proliferation (5).

At least two subpopulations of T<sub>R</sub> cells exist named naturally occurring T<sub>R</sub> (T<sub>R</sub><sup>nat</sup>) cells and adaptive T<sub>R</sub> (T<sub>R</sub><sup>adapt</sup>) cells (4, 6). The lineage relationship between these two subsets remains unclear. In mice, T<sub>R</sub><sup>nat</sup> cells are generated in the thymus by recognizing self-peptides with high avidity yet escaping negative selection (7). T<sub>R</sub><sup>nat</sup> cells play a crucial function in the normal immune system by suppressing autoreactive T cells and maintaining immune tolerance; however, suppressive T<sub>R</sub> cells also inhibit immune responses directed against infectious agents and neoplasms.

Although T<sub>R</sub> cells suppress responding T cells in an Ag-nonspecific manner, T<sub>R</sub> cells need to be activated through the TCR to achieve suppressive activity (8). Thus, it is likely that T<sub>R</sub> cells specific for foreign Ags, termed T<sub>R</sub><sup>adapt</sup> cells, are of extrathymic origin and generated in the periphery from the peripheral T cell repertoire. The possibility that T<sub>R</sub> cells can be generated in the periphery is supported by several in vitro and in vivo models demonstrating the induction of T<sub>R</sub><sup>adapt</sup> cells from CD25<sup>-</sup> T cells by prolonged or repeated antigenic stimulation (9, 10). Alternatively, differentiation of T<sub>R</sub><sup>adapt</sup> cells can be induced by IL-10 or TGF-β (11, 12). However, it is still not determined whether T<sub>R</sub><sup>nat</sup> and T<sub>R</sub><sup>adapt</sup> cells represent distinct lineages or just phenotypic variants induced at different anatomical sites. The transcription factor FOXP3 that is essential for the suppressive activity of T<sub>R</sub><sup>nat</sup> cells was, in mouse models, initially thought to be a specific marker of T<sub>R</sub><sup>nat</sup> cells that could not be induced in activated peripheral T cells (13–15). However, later studies have demonstrated induction of FOXP3 expression in T<sub>R</sub><sup>adapt</sup> cells in both in vitro and in vivo models (16–20).

The mechanism of suppression of T effector cells by T<sub>R</sub> cells is not fully known. Transwell experiments support a contact-dependent mechanism for T<sub>R</sub><sup>nat</sup> cells, although a short-range humoral factor with limited water solubility cannot be ruled out. A role for IL-10, TGF-β, and CTLA-4 have been demonstrated for both T<sub>R</sub><sup>nat</sup> cells and T<sub>R</sub><sup>adapt</sup> cells, but it is not finally determined whether these factors primarily play a role in the differentiation process or in the suppressive activity (3).

PGs have strong immunomodulatory activity within the immune system and can have both systemic and short-range autocrine and paracrine effects (21). PGE<sub>2</sub> binds to the G protein-coupled receptors EP2 and EP4 and effectively suppress T cell immune responses by eliciting a cAMP (protein kinase A) Csk inhibitory pathway localized to lipid rafts (22–29). We have recently described the role of PGE<sub>2</sub> in a mouse model for retroviral-induced immunodeficiency syndrome (MAIDS) (30), and PGE<sub>2</sub> also suppresses autoimmune manifestations and allograft rejections in mouse and human studies (23, 31–33). Within the immune system, cyclooxygenase type 2 (COX-2) is induced during inflammatory reactions and is responsible for production of PGs and thromboxanes from arachidonic acid.

\*The Biotechnology Centre, and <sup>†</sup>Department of Gastroenterological Surgery, Ullevaal University Hospital, University of Oslo, Oslo, Norway

Received for publication December 6, 2005. Accepted for publication April 11, 2006.

The costs of publication of this article were defrayed in part by the payment of page charges. This article must therefore be hereby marked *advertisement* in accordance with 18 U.S.C. Section 1734 solely to indicate this fact.

<sup>1</sup> This work was supported by grants from the National Programme for Research in Functional Genomics in Norway and a Cancer Programme grant in the Research Council of Norway, the Norwegian Cancer Society, Novo Nordic Foundation Committee, and the European Union (Research and Technological Development Grant QLK3-CT-2002-02149).

<sup>2</sup> Present address: Immune and Gene Therapy Unit, Cancer Center Karolinska, Karolinska Institute, SE-171 77 Stockholm, Sweden.

<sup>3</sup> Address correspondence and reprint requests to Dr. Kjetil Taskén, The Biotechnology Centre, University of Oslo, P.O. Box 1125, N-0317 Oslo, Norway. E-mail address: kjetil.tasken@biotek.uio.no

<sup>4</sup> Abbreviations used in this paper: T<sub>R</sub>, regulatory T; T<sub>R</sub><sup>nat</sup>, naturally occurring T<sub>R</sub>; T<sub>R</sub><sup>adapt</sup>, adaptive T<sub>R</sub>; MAIDS, murine acquired immunodeficiency syndrome; COX-2, cyclooxygenase type 2; SEB, staphylococcal enterotoxin B; PKC, protein kinase C; IBMX, 3-isobutyl-1-methylxanthine.

COX-2 is primarily expressed in activated monocytes and macrophages (34), although COX-2 expression is also induced in activated T cells (35). In MAIDS, activated B and T cells express high levels of COX-2 (30). COX-2 expression and production of PGE<sub>2</sub> therefore represent a putative mechanism for the inhibitory action of T<sub>R</sub><sup>adapt</sup> cells induced in the periphery during an inflammatory response such as continuous antigenic stimulation by chronic infectious agents or neoplasms.

In this study, we demonstrate that CD4<sup>+</sup>CD25<sup>-</sup> T cells can develop into FOXP3<sup>+</sup>CD4<sup>+</sup>CD25<sup>+</sup> T<sub>R</sub><sup>adapt</sup> cells in vitro with an equivalent suppressive potential as T<sub>R</sub><sup>nat</sup> cells by continuous polyclonal activation with staphylococcal enterotoxin B (SEB) or anti-CD3/anti-CD28. During the differentiation process, the T<sub>R</sub><sup>adapt</sup> cells started to express COX-2 and produce PGE<sub>2</sub>. Interestingly, neither resting nor activated T<sub>R</sub><sup>nat</sup> cells expressed COX-2. Recently, it has been demonstrated that PGE<sub>2</sub> can induce FOXP3<sup>+</sup> T cells with immunoregulatory properties (36, 37). However, it has not been shown previously that T<sub>R</sub><sup>adapt</sup> cells are COX-2 positive and can be a source of PGE<sub>2</sub>. The PGE<sub>2</sub> production from T<sub>R</sub><sup>adapt</sup> cells could be fully suppressed by the COX inhibitor indomethacin and by COX-2-specific inhibitor. The T<sub>R</sub><sup>adapt</sup> cells also produced significant amounts of IL-10 and TGF-β, but the inhibitory activity of the T<sub>R</sub><sup>adapt</sup> cells was not dependent on either cytokine. In contrast, COX inhibitors and EP-receptor antagonists reversed the inhibitory action of the T<sub>R</sub><sup>adapt</sup> cells in most experiments. Furthermore, PGE<sub>2</sub> induced FOXP3 expression in resting CD25<sup>-</sup> T cells. We conclude that COX-2-dependent PGE<sub>2</sub> production represents the immunosuppressive mechanism for T<sub>R</sub><sup>adapt</sup> cells in this model, and that FOXP3 is induced in an autocrine fashion by PGE<sub>2</sub>. These results demonstrate a new mechanism of immunosuppression by T<sub>R</sub><sup>adapt</sup> cells.

## Materials and Methods

### Reagents

PGE<sub>2</sub> (Sigma-Aldrich) and the COX inhibitor indomethacin (Sigma-Aldrich) were dissolved in ethanol. Butaprost methyl ester (Cayman Chemical) was dissolved in methyl acetate. 8-CPT-cAMP (Sigma-Aldrich) and IL-2 (R&D Systems) were dissolved in water. The COX-2-specific inhibitor SC58125 (Cayman Chemical), the EP2 receptor antagonist AH6809 (Cayman Chemical), and the EP4 receptor antagonist AH23848 (Sigma-Aldrich) were dissolved in DMSO. Anti-IL-10 (R&D Systems), anti-TGF-β1, -2, -3 (R&D Systems), and IL-7 (R&D Systems) were dissolved in PBS. Vehicle was used as control in all experiments. CFSE (Sigma-Aldrich) was dissolved in DMSO.

### Isolation of cells

Human peripheral blood was obtained from normal healthy donors (Ullevaal University Hospital Blood Center, Oslo, Norway), and PBMC were isolated by Isopaque-Ficoll (Lymphoprep; Nycomed) gradient centrifugation. CD4<sup>+</sup>CD25<sup>+</sup> T cells were isolated using a CD4<sup>+</sup>CD25<sup>+</sup> T<sub>R</sub> cell isolation kit according to the manufacturer's manual (Miltenyi Biotec). Briefly, CD4<sup>+</sup> T cells were isolated from PBMC by depletion of cells expressing CD8, CD14, CD19, CD36, CD56, CD123, TCRγδ, and Glycophorin A using a Biotin-Antibody Cocktail. Next, Anti-Biotin MicroBeads were added, and after incubation and washing, the cells were subjected to a magnetic MACS Column (Miltenyi Biotec). The CD4<sup>+</sup> T cell fraction was collected and separated into a CD25<sup>+</sup> and a CD25<sup>-</sup> fraction by using CD25 MicroBeads and magnetic separation on a MACS Column. The cells were routinely analyzed by flow cytometry, and the purity of the CD4<sup>+</sup>CD25<sup>+</sup> and CD4<sup>+</sup>CD25<sup>-</sup> T cell populations were >98%. In some experiments, CD25<sup>+</sup> cells were depleted directly from PBMC after incubation with CD25 microbeads (Miltenyi Biotec) as described above. Cells were cultured in RPMI 1640 (Invitrogen Life Technologies) supplemented with 10% FCS, 100 U/ml penicillin/streptomycin, 1 mM sodium pyruvate, and 1/100 nonessential amino acids (complete medium).

### Generation of T<sub>R</sub><sup>adapt</sup> cells

T<sub>R</sub><sup>adapt</sup> cells were generated from PBMC depleted of CD25<sup>+</sup> cells incubated with 2 μg/ml SEB (Sigma-Aldrich) in complete medium for 2, 4, or 7 days. In experiments where pure T cells were required, T<sub>R</sub><sup>adapt</sup> cells were generated from CD4<sup>+</sup>CD25<sup>-</sup> T cells by incubation with soluble anti-CD3 (2.5 μg/ml) or plate-bound anti-CD3 (10 μg/ml) and soluble anti-CD28 (0.5 μg/ml) (Immunotech). At the end of the incubation period, CD4<sup>+</sup>CD25<sup>+</sup> T cells were isolated as described above and used in additional experiments. In some experiments, 10 μg/ml anti-TGF-β1, -2, -3 was added to complete medium before activation and during generation of T<sub>R</sub><sup>adapt</sup> cells. Monoclonal anti-CD3-ε (OKT-3) was affinity-purified from supernatants of a hybridoma cell line from American Type Culture Collection.

### ELISA

For ELISA, supernatants from cell cultures (1 × 10<sup>6</sup> cells/ml) were collected, and concentrations of PGE<sub>2</sub>, IL-10, and TGF-β1 were assessed using ELISA (R&D Systems) according to the manufacturer's instructions. For the TGF-β ELISA, the culture supernatant was first treated with acid to lower the pH to 2.0, which denatures latency-associated peptide and allows the detection of active TGF-β. The supernatant was then brought back to neutral pH before the ELISA. In some experiments, supernatants for analysis of cytokines levels were collected from T<sub>R</sub><sup>adapt</sup> cells restimulated with plate-bound anti-CD3 and anti-CD28 for 4, 8, and 24 h.

### Western blot analysis

Cells were lysed in Laemmli sample buffer, loaded onto one-dimensional SDS-polyacrylamide gels (Bio-Rad), subjected to electrophoresis, and transferred onto polyvinylidene difluoride membranes (Millipore) by electroblotting. The membranes were blocked for 2 h in a solution containing 25 mM Tris-HCl (pH 7.5), 150 mM NaCl, 0.05% Tween 20 plus 5% milk, and incubated with monoclonal mouse anti-human COX-2 (1/5000) (Cayman Chemical), rabbit polyclonal anti-human COX-2 (1/1000) (Santa Cruz Biotechnology), monoclonal goat anti-human FOXP3 (1/1000) (Santa Cruz Biotechnology), mouse anti-human FOXP3 (1/1000) (eBioScience), monoclonal mouse anti-human FOXP3 (1/200) (Abcam) or monoclonal mouse anti-human protein kinase C (PKC)-α (1/4000) (BD Biosciences) overnight at 4°C in blocking solution. The membranes were washed in a solution containing 25 mM Tris-HCl (pH 7.5), 150 mM NaCl, and 0.05% Tween 20. Immunoreactive proteins were visualized by SuperSignal (Pierce) using HRP-conjugated secondary Abs and subjected to autoradiography.

### Flow cytometry

Cells were washed in PBS, fixed in 1% paraformaldehyde, and permeabilized in FACS Permeabilizing Solution (BD Biosciences) for 10 min before staining with CD8 allophycocyanin, CD3 PerCP, CD25 PE, COX-2 FITC, or IFN-γ PE (BD Biosciences; BD Biosciences Pharmingen). The cells were washed once in PBS containing 1% BSA and fixed in 1% paraformaldehyde before being acquired on a flow cytometer (FACSCalibur; BD Biosciences) and analyzed using FlowJo software (Tree Star).

### T cell proliferation assay

Purified CD4<sup>+</sup>CD25<sup>-</sup> T cells (1 × 10<sup>5</sup>) were stimulated with soluble anti-CD3 (5.0 μg/ml) and anti-CD28 (0.5 μg/ml) in the absence or presence of T<sub>R</sub><sup>adapt</sup> cells at a 3:1 ratio. The cells were cultured at 37°C in 5% CO<sub>2</sub> for 6 days and pulsed with 5 μCi of [*methyl*-<sup>3</sup>H]thymidine for the last 16–18 h, harvested onto filters, and counted in a beta scintillation counter.

### CFSE proliferation assay

CD25<sup>-</sup> T cells were resuspended at a concentration of 1 × 10<sup>7</sup> cells/ml RPMI 1640 and labeled with 2 mM CFSE for 10 min at 37°C. Labeling was quenched with complete medium, and the cells were washed twice before stimulation with 2.5 mg/ml SEB for 4 days. The cells were fixed, stained for cell surface factors, and analyzed by flow cytometry as described. Transwell experiments were conducted in 24-well plates (1 ml/well) with 2 × 10<sup>5</sup> effector cells, APC, and SEB in the absence or presence of 2 × 10<sup>5</sup> T<sub>R</sub><sup>adapt</sup> cells added directly to the culture or to the Transwell inserts (pore size, 3.0 μm; Nunc).

### Cytokine flow cytometry

T<sub>R</sub> cells were added in increasing ratios to autologous PBMC depleted of CD25<sup>+</sup> T cells to a total of 2 × 10<sup>5</sup> cells and stimulated with 10 μg/ml SEB (Sigma-Aldrich) for 20 h. Brefeldin A (Sigma-Aldrich) was added at

a final concentration of 5  $\mu\text{M}$  for the last 5 h of the incubation period to promote cytokine accumulation. In all coculture experiments,  $T_R$  cells were stained with 2  $\mu\text{M}$  CFSE for 5 min at 37°C, to allow separate flow cytometric analysis of the  $T_R$  cells and the responding effector T cells. The cells were fixed, permeabilized, stained for cell surface factors and intracellular IFN- $\gamma$ , and analyzed by flow cytometry as described.

#### Cyclic AMP assay

T cells ( $1.5 \times 10^6$ ) were left untreated or treated with increasing concentrations of agonist for 1.5 min in stimulation buffer with the nonspecific phosphodiesterase inhibitor 3-isobutyl-1-methylxanthine (IBMX). Concentrations of cAMP were assessed by a plate-based radioimmunoassay according to the manufacturer's instructions (PerkinElmer Life and Analytical Sciences). The adenylyl cyclase activator forskolin (Sigma-Aldrich) was used as positive control.

#### Real-time quantitative PCR

For real-time quantitative PCR analysis of FOXP3, COX-2, and  $\beta$ -actin, total RNA was extracted using an RNeasy Mini Spin Kit (Qiagen) according to the manufacturer's instructions, and cDNA was prepared using the iScript cDNA Synthesis Kit (Bio-Rad) according to the manufacturer's manual. Message levels were quantified by real-time PCR using the iCycler iQ Real-Time PCR Detection System (Bio-Rad). Amplification reactions were performed in a 96-well plate in a total volume of 25  $\mu\text{l}$ /well consisting of 300 nM forward and 300 nM reverse primers specific for FOXP3 (forward, 5'-GAA ACA GCA CAT TCC CAG AGT TC-3'; reverse, 5'-ATG GCC CAG CGG ATG AG-3'), COX-2 (forward, 5'-GCC CTT CCT CCT GTG CC-3'; reverse, 5'-AAT CAG GAA GCT GCT TTT TAC-3'), or  $\beta$ -actin (forward, 5'-AGG CAC CAG GGC GTG AT-3'; reverse, 5'-TCG TCC CAG TTG GTG ACG AT-3'). PCR amplifications consisted of 45 cycles of denaturation at 95°C for 15 s and annealing and extension at 60°C for 1 min, and target product was detected using SYBR Green I dye (iQ SYBR Green Supermix; Bio-Rad).  $\beta$ -Actin was used as a reference housekeeping gene for all samples. All samples were run in triplicate, standard curves were run on the same plate, and the relative standard curve method was used for calculation of relative gene expression. Relative expression was determined by normalizing the expression of each target to  $\beta$ -actin, and then comparing this normalized value to the normalized expression in a reference sample to calculate a fold-change value.

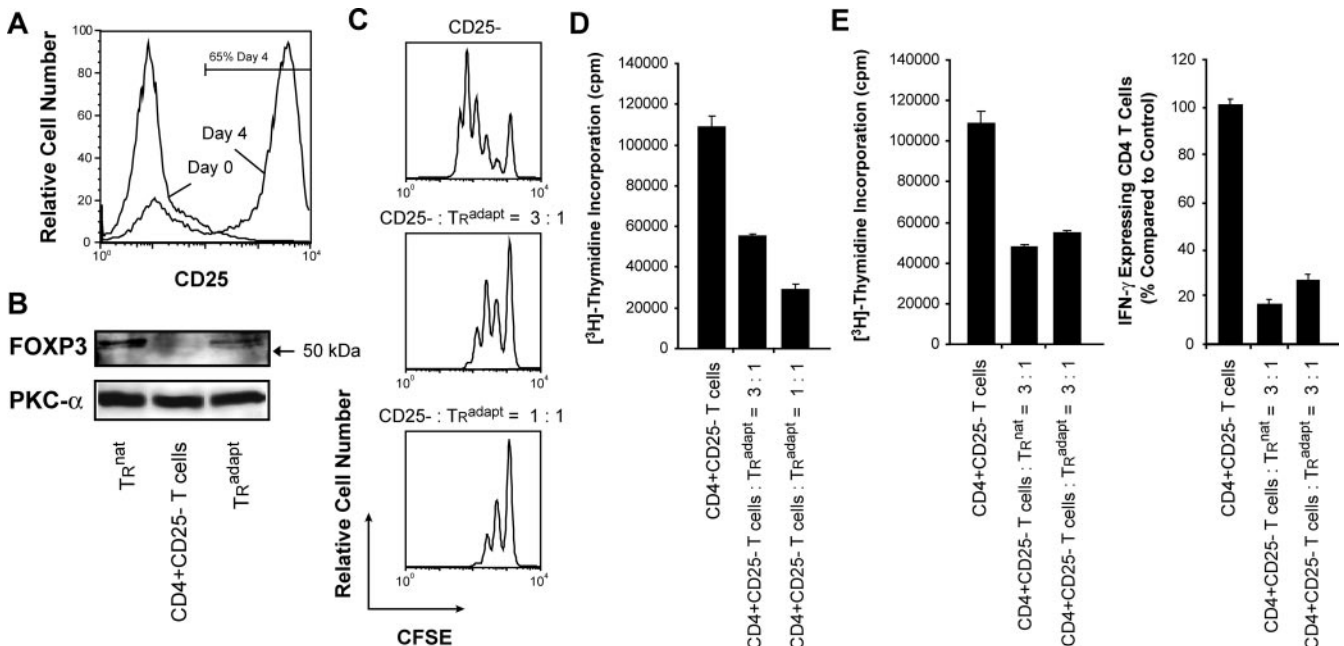
## Results

### Induction of $T_R^{\text{adapt}}$ cells

Several ex vivo and in vivo experimental models for induction of suppressive  $CD4^+ T$  cells from  $CD25^- T$  cells have been described. Generation of  $T_R1$  cells that produce large amounts of IL-10 can be induced by repetitive or sustained stimulation of  $CD4^+CD25^- T$  cells ex vivo in the presence of IL-10 (11, 38). IL-10-producing  $T_R$  cells can also be induced in culture by the presence of vitamin D3 and dexamethasone (39), and TGF- $\beta$ -producing Th3 cells are generated during induction of oral tolerance to self-Ags (9).

We have generated a model for induction of  $T_R^{\text{adapt}}$  cells from  $CD4^+CD25^- T$  cells by prolonged in vitro stimulation of PBMC depleted of  $CD25^+$  T cells with SEB or stimulation of purified  $CD4^+CD25^- T$  cells with anti-CD3/anti-CD28 for 4–7 days (Ref. 40 and Fig. 1). T cells start to express CD25 within the first 24 h when they are activated, and after 4 days in culture 40–80% of the  $CD4^+$  T cells expressed CD25 at equal levels as  $T_R^{\text{nat}}$  cells (Fig. 1A). We then isolated the  $CD4^+CD25^+$  T cells and compared the FOXP3 protein expression by Western blot analysis with that of  $T_R^{\text{nat}}$  cells and  $CD4^+CD25^- T$  cells from autologous donors (Fig. 1B). FOXP3 was expressed at equal levels in the induced  $CD4^+CD25^+$  T cells and the  $T_R^{\text{nat}}$  cells, but was not expressed in the  $CD4^+CD25^- T$  cells. This is in line with recent publications that have demonstrated induction of FOXP3 in  $T_R^{\text{adapt}}$  cells that have been induced from  $CD4^+CD25^- T$  cells using other experimental systems (16–20).

To assess the inhibitory capacity of the induced FOXP3 $^+CD4^+CD25^+$  T cells, we compared the SEB-induced proliferation of T cells in PBMC depleted of  $CD25^+$  cells in the presence and absence of induced  $CD4^+CD25^+$  T cells from autologous donors (Fig. 1C). The  $CD4^+CD25^+$  T cells were induced



**FIGURE 1.** Suppressive  $CD4^+CD25^+$  T cells ( $T_R^{\text{adapt}}$  cells) can be induced from  $CD4^+CD25^- T$  cells. **A**, CD25 expression on  $CD4^+$  T cells analyzed by flow cytometry in PBMC depleted of  $CD25^+$  cells at day 0 and after SEB stimulation for 4 days. **B**, Western blot analysis of FOXP3 protein levels in  $T_R^{\text{nat}}$  cells,  $CD4^+CD25^- T$  cells, and  $CD4^+CD25^+$  T cells induced by SEB stimulation for 4 days as in **A**. A PKC- $\alpha$  blot was used as loading control. **C** and **D**,  $T_R^{\text{adapt}}$  cells were added at increasing ratios to autologous  $CD4^+CD25^- T$  cells. SEB-induced T cell proliferation in PBMC depleted of  $CD25^+$  cells was assessed by CFSE proliferation assay (**C**). Anti-CD3/anti-CD28-induced T cell proliferation was assessed by [ $^3\text{H}$ ]thymidine incorporation (triplicates, mean  $\pm$  SEM) (**D**). **E**, Anti-CD3/anti-CD28-induced T cell proliferation as described above (*left*) or SEB-induced IFN- $\gamma$  expression in  $CD4^+$  T cells in PBMC depleted of  $CD25^+$  cells (*right*) with or without of  $T_R^{\text{nat}}$  cells or  $T_R^{\text{adapt}}$  cells from autologous donors (triplicates, mean  $\pm$  SEM).

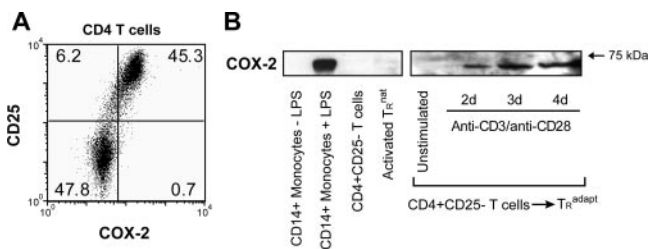
by *in vitro* stimulation for 4–7 days. In the coculturing experiments, the CD4<sup>+</sup>CD25<sup>+</sup> T cells suppressed T cell proliferation in a concentration-dependent manner. Similar results were obtained with anti-CD3/anti-CD28-induced proliferation of purified CD4<sup>+</sup>CD25<sup>-</sup> T cells measured by [<sup>3</sup>H]thymidine incorporation (Fig. 1D). The inhibitory capacity of the induced CD4<sup>+</sup>CD25<sup>+</sup> T cells was within the same range as that of T<sub>R</sub><sup>nat</sup> cells from the autologous donor (Fig. 1E, *left panel*). Furthermore, similar to what we observed with inhibition of proliferation, the induced CD4<sup>+</sup>CD25<sup>+</sup> T cells suppressed IFN- $\gamma$  expression in CD4<sup>+</sup> T cells in PBMC from the autologous donors to the same extent as did the T<sub>R</sub><sup>nat</sup> cells (Fig. 1E, *right panel*). The method of stimulation with either SEB or with anti-CD3/anti-CD28 did not affect the suppressive potential of the induced CD4<sup>+</sup>CD25<sup>+</sup> T cells. Functionally, the above defines the induced CD4<sup>+</sup>CD25<sup>+</sup> T cells as T<sub>R</sub><sup>adapt</sup> cells.

*T<sub>R</sub><sup>adapt</sup> cells express COX-2 and produce PGE<sub>2</sub>*

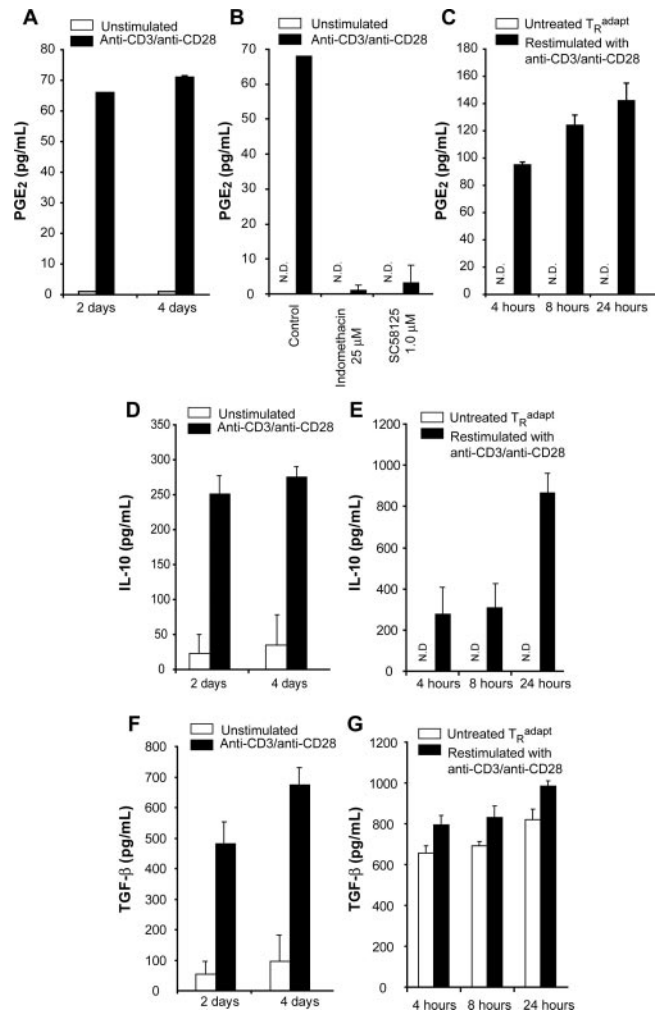
COX-2 is primarily expressed in activated monocytes and macrophages (34). However, in the MAIDS model, which is characterized by massive immune activation due to a chronic retroviral infection, the T cells express high levels of COX-2 and produce PGE<sub>2</sub> (30). We therefore hypothesized that COX-2 expression and production of PGE<sub>2</sub> might represent the inhibitory mechanism of T<sub>R</sub><sup>adapt</sup> cells induced through prolonged *in vitro* activation.

To examine whether T<sub>R</sub><sup>adapt</sup> cells expressed COX-2, purified CD4<sup>+</sup>CD25<sup>-</sup> T cells were stimulated with anti-CD3/anti-CD28 for a period of 2–4 days. During the period of stimulation, the CD4<sup>+</sup>CD25<sup>+</sup> T cells started to express COX-2 (Fig. 2). Interestingly, COX-2 expression was neither observed in activated T<sub>R</sub><sup>nat</sup> cells (Fig. 2B) nor resting T<sub>R</sub><sup>nat</sup> cells (data not shown). This finding may represent an important functional difference between T<sub>R</sub><sup>adapt</sup> cells and T<sub>R</sub><sup>nat</sup> cells. During the differentiation process, the COX-2 expression was accompanied by PGE<sub>2</sub> production (Fig. 3A) that was completely suppressed in the presence of the COX inhibitor indomethacin and the COX-2-specific inhibitor SC58125 (Fig. 3B). After 4 days of stimulation of CD4<sup>+</sup>CD25<sup>-</sup> T cells, CD4<sup>+</sup>CD25<sup>+</sup> T<sub>R</sub><sup>adapt</sup> cells were purified and restimulated with anti-CD3/anti-CD28 (Fig. 3C). The PGE<sub>2</sub> production was further enhanced in the culture of purified T<sub>R</sub><sup>adapt</sup> cells.

During the differentiation process, the CD4<sup>+</sup> T cells also produced significant amounts of IL-10 and TGF- $\beta$  (Fig. 3, D and F). After 4 days of stimulation, the T<sub>R</sub><sup>adapt</sup> cells were purified and restimulated with anti-CD3/anti-CD28 (Fig. 3, E and G). IL-10 production peaked after 24 h (Fig. 3E). In contrast to the IL-10 production, TGF- $\beta$  production appeared to be independent of restimulation of the T<sub>R</sub><sup>adapt</sup> cells (Fig. 3G).



**FIGURE 2.** T<sub>R</sub><sup>adapt</sup> cells express COX-2. A, PBMC was depleted of CD25<sup>+</sup> cells and stimulated with anti-CD3/anti-CD28 for 2 days. COX-2 expression in CD3<sup>+</sup>CD4<sup>+</sup> T cells was assessed by intracellular flow cytometry. Data from one representative experiment is shown. B, Western blot analysis of COX-2 protein levels in T<sub>R</sub><sup>nat</sup>, untreated CD4<sup>+</sup>CD25<sup>-</sup>, and CD4<sup>+</sup>CD25<sup>-</sup> T cells (1 × 10<sup>7</sup>) stimulated with anti-CD3/anti-CD28 for 2, 3, and 4 days. Untreated and LPS-stimulated CD14<sup>+</sup> monocytes (1 × 10<sup>6</sup>) were used as controls.

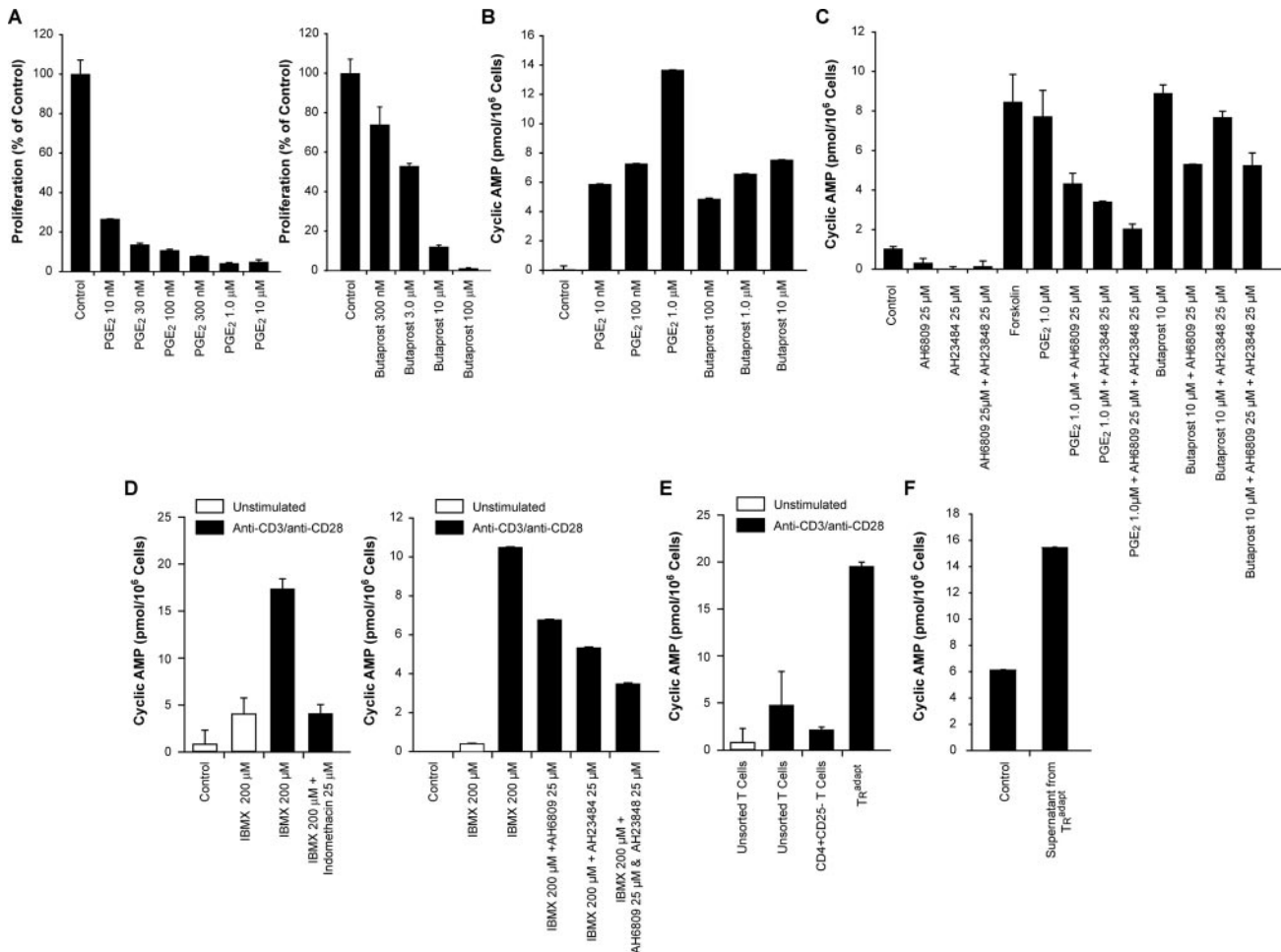


**FIGURE 3.** T<sub>R</sub><sup>adapt</sup> cells produce PGE<sub>2</sub>, IL-10, and TGF- $\beta$  following stimulation with anti-CD3/anti-CD28. Concentration of PGE<sub>2</sub> (A), IL-10 (D), and TGF- $\beta$  (F) in supernatants of CD4<sup>+</sup>CD25<sup>-</sup> T cells treated with anti-CD3/anti-CD28 for 2 and 4 days. B, CD4<sup>+</sup>CD25<sup>-</sup> T cells were preincubated for 2 h with indomethacin or the COX-2 inhibitor SC58125 and stimulated with anti-CD3/anti-CD28 for 2 days as in A. Concentration of PGE<sub>2</sub> (C), IL-10 (E), and TGF- $\beta$  (G) in supernatants of purified T<sub>R</sub><sup>adapt</sup> cells restimulated with anti-CD3/anti-CD28 for 4, 8, and 24 h. T<sub>R</sub><sup>adapt</sup> cells were induced by stimulation of CD4<sup>+</sup>CD25<sup>-</sup> T cells for 4 days with soluble anti-CD3 (2.5  $\mu$ g/ml) and anti-CD28 (0.5  $\mu$ g/ml). Mean  $\pm$  SEM. N.D., Not detectable.

*PGE<sub>2</sub> inhibits T cell immune responses and leads to cAMP production*

PGE<sub>2</sub> acts via a family of four G protein-coupled 7-span receptors termed EP1 to EP4. Human T cells express EP2 and EP4 receptors. To examine the immunosuppressive properties of PGE<sub>2</sub> on CD4<sup>+</sup> T cell function, anti-CD3/anti-CD28-induced T cell proliferation was examined in the presence and absence of exogenous PGE<sub>2</sub> (Fig. 4A, *left panel*). Proliferation was suppressed in a concentration-dependent manner in the responding T cells. Similar results were obtained with the EP2 receptor agonist butaprost, indicating that the suppressive properties of PGE<sub>2</sub> are partly mediated by the EP2 receptor (Fig. 4A, *right panel*).

Both EP2 and EP4 receptors signal through G proteins, leading to production of cAMP. As seen in Fig. 4B, PGE<sub>2</sub> and butaprost led to a concentration-dependent increase in cAMP production that was suppressed by the EP2 receptor antagonist AH6809 and the EP4 receptor antagonist AH23848 (Fig. 4C). AH6809 and



**FIGURE 4.** PGE<sub>2</sub> and the EP2 selective agonist butaprost inhibit superantigen-induced cytokine production and increase cAMP levels in T cells. *A*, Anti-CD3/anti-CD28-induced T cell proliferation in the absence and presence of increasing concentrations of PGE<sub>2</sub> or butaprost assessed by [<sup>3</sup>H]thymidine incorporation. The cells were preincubated with PGE<sub>2</sub> or butaprost 1 h before stimulation. *B*, Cyclic AMP levels in T cells treated with increasing concentrations of PGE<sub>2</sub> or butaprost for 1.5 min. *C*, Cyclic AMP levels in T cells preincubated for 1 h in the absence or presence of the EP2 and/or EP4 receptor antagonists AH6809 and AH23848, respectively, and stimulated with PGE<sub>2</sub> or butaprost for 1.5 min. The adenylyl cyclase activator forskolin was used as a positive control (100 μM, 4 min). *D*, Cyclic AMP levels in CD4<sup>+</sup>CD25<sup>-</sup> T cells that were unstimulated or stimulated with anti-CD3/anti-CD28 in the absence or presence of indomethacin (*left panel*) or EP2 and/or EP4 antagonists (*right panel*). The cells were preincubated with inhibitors for 1 (AH6809, AH23848) or 2 (indomethacin) h followed by stimulation with anti-CD3/anti-CD28 for 3 days. At day 2, the nonselective phosphodiesterase inhibitor IBMX (200 μM) was added to the cultures to promote cAMP accumulation. *E*, Cyclic AMP levels measured in T cells and in purified CD4<sup>+</sup>CD25<sup>-</sup> T cells and  $T_R^{\text{adapt}}$  cells after stimulation for 3 days with anti-CD3/anti-CD28. After purification, the separate subpopulations were cultured for 4 h without any stimulation before assessment of the cAMP levels. *F*, Cyclic AMP levels in purified CD4<sup>+</sup>CD25<sup>-</sup> T cells incubated in medium recovered from unstimulated CD4<sup>+</sup>CD25<sup>-</sup> cells (control) or in medium recovered from  $T_R^{\text{adapt}}$  cells for 4 h in the presence of IBMX (200 μM). Mean ± SEM.

AH23848 had additive inhibitory effects on PGE<sub>2</sub>-induced cAMP production, whereas only AH6809 suppressed cAMP production induced by butaprost, confirming the EP2 receptor specificity of this agonist. To examine whether PGE<sub>2</sub> produced by  $T_R^{\text{adapt}}$  cells induced cAMP production, we first stimulated CD4<sup>+</sup>CD25<sup>-</sup> T cells with anti-CD3/anti-CD28 for 3 days, and IBMX, a non-specific cyclic nucleotide phosphodiesterase inhibitor, was added to the culture for the last 24 h to promote cAMP accumulation (Fig. 4D). Cyclic AMP accumulated in the CD4<sup>+</sup> T cells while cAMP production was suppressed in the presence of indomethacin, indicating that the cAMP production was dependent on COX activity. Similar results were obtained using AH6809 and AH23848, confirming that PGE<sub>2</sub> is the humoral factor that drives cAMP production by an EP2/EP4 receptor-dependent mechanism. We next stimulated CD25<sup>-</sup> T cells for 3 days with anti-CD3/anti-CD28 in an identical manner as in the previous experiment, but without adding IBMX to the culture (Fig. 4E). At day 3 the T cells were washed, separated into CD4<sup>+</sup>CD25<sup>-</sup> T cells and  $T_R^{\text{adapt}}$  cells, and cultured

for another 4 h without any further stimulation. The cAMP levels were measured in the separate populations to examine potential autocrine or paracrine effects of PGE<sub>2</sub>. Although the intracellular cAMP levels were negligible in the unsorted T cells and CD4<sup>+</sup>CD25<sup>-</sup> T cells, there was a significant increase in the cAMP levels in the  $T_R^{\text{adapt}}$  cells, indicating cAMP production due to ongoing PGE<sub>2</sub> production (Fig. 4E). In a final experiment, the supernatant from  $T_R^{\text{adapt}}$  cells, induced from CD4<sup>+</sup>CD25<sup>-</sup> T cells with anti-CD3/anti-CD28 stimulation for 4 days, was added to unstimulated CD4<sup>+</sup>CD25<sup>-</sup> T cells. The supernatant from the  $T_R^{\text{adapt}}$  cells induced a significant increase in the level of intracellular cAMP in the T cells, whereas medium recovered from the CD4<sup>+</sup>CD25<sup>-</sup> T cells did not (Fig. 4F).

#### $T_R^{\text{adapt}}$ cells suppress T cell responses by a humoral factor

To examine whether immunosuppression by  $T_R^{\text{adapt}}$  cells required cellular contact, the suppressive activity of the cells was tested in a Transwell experiment. SEB-induced T cell proliferation in

PBMC depleted of CD25<sup>+</sup> cells was assessed by CFSE proliferation assay, where T<sub>R</sub><sup>adapt</sup> cells from autologous donors were added either directly to the cultures or to the Transwell inserts (Fig. 5A). The results clearly showed that T<sub>R</sub><sup>adapt</sup> cells suppress T cell proliferation in a contact-independent manner. These results were further supported by the observation that supernatant from stimulated T<sub>R</sub><sup>adapt</sup> cells suppressed CD4<sup>+</sup> T cell IFN- $\gamma$  expression (Fig. 5B). This clearly indicates that T<sub>R</sub><sup>adapt</sup> cells are able to suppress T cell responses by paracrine action of a humoral factor.

#### Immunosuppression by T<sub>R</sub><sup>adapt</sup> cells is reversed by COX-2 inhibitors and EP-receptor antagonists

To examine the immunosuppressive role of PGE<sub>2</sub> production by T<sub>R</sub><sup>adapt</sup> cells, SEB-induced T cell proliferation in PBMC depleted of CD25<sup>+</sup> cells was examined with and without addition of autologous T<sub>R</sub><sup>adapt</sup> cells in the presence and absence of the COX inhibitor indomethacin, the COX-2-specific inhibitor SC58125, and the EP-2 and EP-4 receptor antagonists AH6809 and AH23848, respectively (Fig. 6A). All agents fully or significantly reversed the immunosuppression mediated by the T<sub>R</sub><sup>adapt</sup> cells. Similar results were obtained with anti-CD3/anti-CD28-induced T cell proliferation (Fig. 6B). In similar experiments, addition of IL-2 or IL-7 did not reverse the suppressive effect of the T<sub>R</sub><sup>adapt</sup> cells (data not shown), indicating that the activity of these cells is not dependent on IL-2 consumption, but rather represents an active mechanism that involves production and secretion of PGE<sub>2</sub>.

We next examined SEB-induced IFN- $\gamma$  expression in CD4<sup>+</sup> T cells with and without addition of T<sub>R</sub><sup>adapt</sup> cells in the presence and absence of indomethacin and the COX-2-specific antagonist SC58125 (Fig. 6C). Indomethacin completely reversed the immunosuppression mediated by the T<sub>R</sub><sup>adapt</sup> cells. Comparable results

were obtained with SC58125. These observations suggest that the inhibitory effect of T<sub>R</sub><sup>adapt</sup> cells is mediated by COX-2 expression and paracrine effects of PGE<sub>2</sub>. A small increase in IFN- $\gamma$  expression was also observed in the control cultures (PBMC depleted of CD25<sup>+</sup> T cells) when indomethacin and SC58125 was added. This may be due to COX-2 activity in monocytes present in the culture. Although the T<sub>R</sub><sup>adapt</sup> cells produced IL-10 and TGF- $\beta$  at high levels (Fig. 3, D–G), neutralizing Abs to IL-10 and TGF- $\beta$  had little or no effect on the T<sub>R</sub><sup>adapt</sup> cell-mediated suppression of IFN- $\gamma$  expression (Fig. 6C) or on T cell proliferation (data not shown). We also induced T<sub>R</sub><sup>adapt</sup> cells in the presence of anti-TGF- $\beta$ ; however, no effect on development or immunosuppressive properties was observed (data not shown).

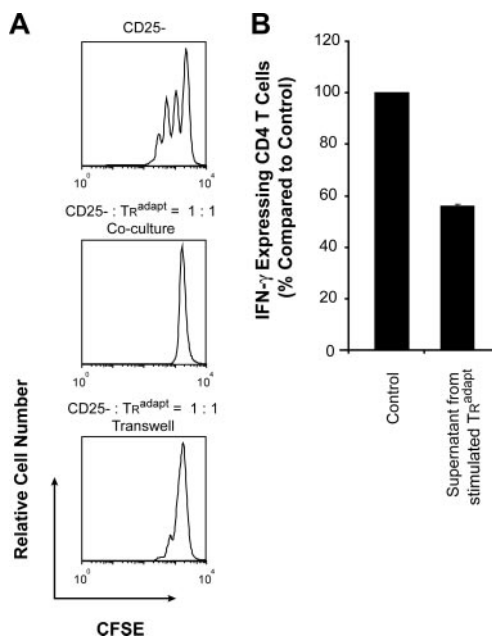
#### PGE<sub>2</sub> induces FOXP3 expression in human CD4<sup>+</sup> T cells

FOXP3 is crucial in the development and function of T<sub>R</sub><sup>nat</sup> cells (13–15), and is also expressed in both murine and human T<sub>R</sub><sup>adapt</sup> cells induced from CD4<sup>+</sup>CD25<sup>-</sup> T cells by continuous polyclonal stimulation or by stimulation in the presence of TGF- $\beta$  (Fig. 1B and Refs. 16–18).

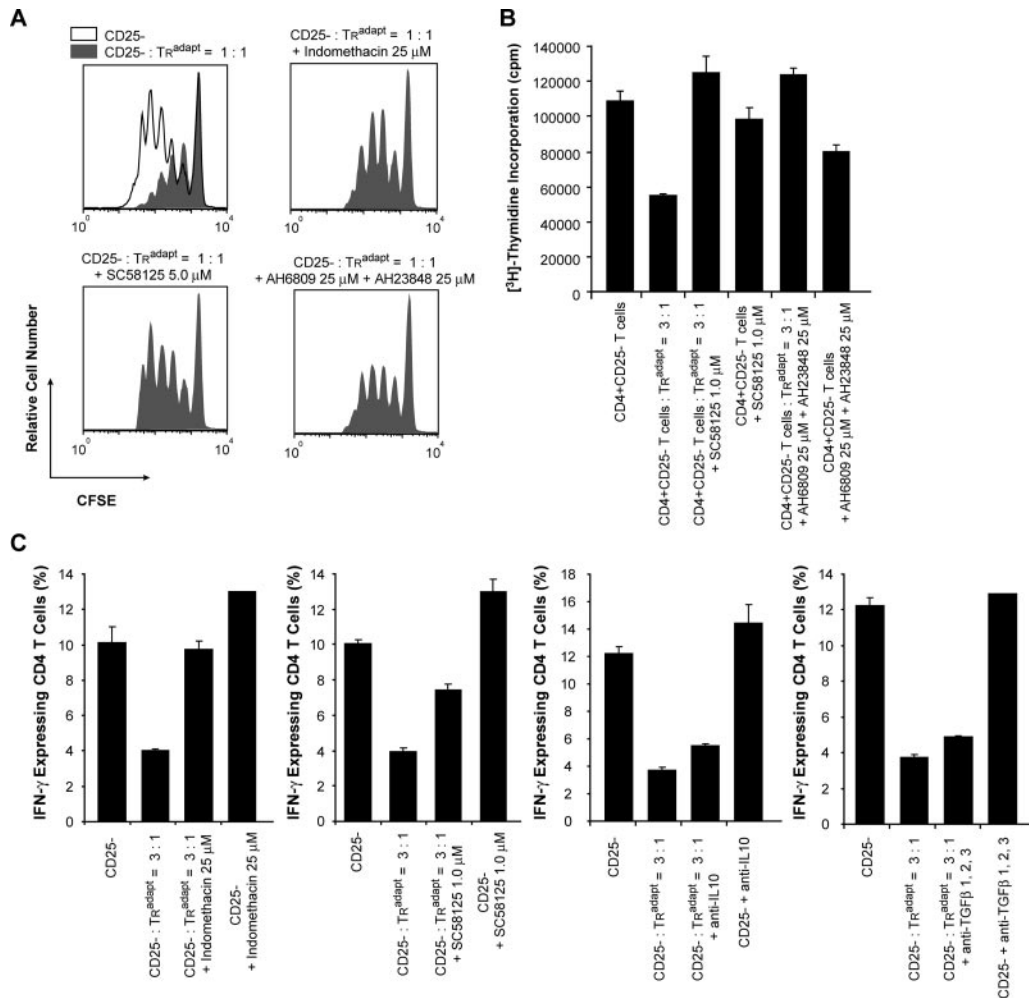
Because COX-2 expression and PGE<sub>2</sub> production appeared to play an important role in the immunosuppressive mechanism of T<sub>R</sub><sup>adapt</sup> cells, we examined whether PGE<sub>2</sub> leads to FOXP3 expression. We first examined the kinetics of COX-2 and FOXP3 mRNA expression by real-time PCR during induction of T<sub>R</sub><sup>adapt</sup> cells from CD25<sup>-</sup> T cells with SEB (Fig. 7A). The kinetics of COX-2 and FOXP3 expression were nearly identical. These findings were confirmed at the protein level, where both FOXP3 and COX-2 appeared after 16–24 h of stimulation (Fig. 7B). To further explore whether PGE<sub>2</sub> induced FOXP3 mRNA expression, unstimulated CD4<sup>+</sup>CD25<sup>-</sup> T cells were cultured in the absence and presence of PGE<sub>2</sub> or the cAMP analog 8-CPT-cAMP (Fig. 7C). PGE<sub>2</sub> led to a 3- to 5-fold induction of FOXP3 expression in a concentration-dependent manner. Furthermore, 8-CPT-cAMP induced FOXP3 expression to the same levels as PGE<sub>2</sub>. This suggests that FOXP3 expression is induced as a result of autocrine effects of PGE<sub>2</sub> in T<sub>R</sub><sup>adapt</sup> cells and that cAMP acts as the intracellular signal. We also evaluated the effect of TGF- $\beta$  and anti-TGF- $\beta$  on induction of FOXP3, either alone or in combination with PGE<sub>2</sub>. Although TGF- $\beta$  induced FOXP3 expression in some experiments, presence of anti-TGF- $\beta$  did not inhibit PGE<sub>2</sub>-induced FOXP3 expression (data not shown). This indicates that PGE<sub>2</sub> is able to induce FOXP3 expression independently of TGF- $\beta$ . In a final experiment, T<sub>R</sub><sup>adapt</sup> cells were generated from CD4<sup>+</sup>CD25<sup>-</sup> T cells in the presence of indomethacin or the COX-2-specific inhibitor SC58125 (Fig. 7D). Both indomethacin and SC58125 significantly suppressed FOXP3 mRNA expression. These findings suggest that PGE<sub>2</sub> leads to FOXP3 expression in a cAMP-dependent manner in both CD25<sup>-</sup> and CD25<sup>+</sup>CD4<sup>+</sup> T cells, and that PGE<sub>2</sub> is an important immunosuppressive humoral factor whereby T<sub>R</sub><sup>adapt</sup> cells suppress effector T cells (Fig. 7E).

## Discussion

The role of T<sub>R</sub><sup>nat</sup> cells in normal immune control is now well established, although central questions regarding lineage relationship and mechanism of suppression of responding effector T cells remain to be answered. T<sub>R</sub><sup>adapt</sup> cells represent a less-characterized subpopulation of suppressive CD4<sup>+</sup> T cells that are induced in the periphery by continuous antigenic exposure. In line with this thinking, T<sub>R</sub><sup>adapt</sup> cells may play a role to resolve an immune response once the Ag is cleared. In chronic infectious diseases, T<sub>R</sub><sup>adapt</sup> cells may balance the immune response to limit immune-related tissue damage and at the same time achieve immune control and prevent bacterial or viral replication. Whether or not T<sub>R</sub><sup>nat</sup> cells and T<sub>R</sub><sup>adapt</sup>



**FIGURE 5.** T<sub>R</sub><sup>adapt</sup> cells inhibit T cell immune responses by a humoral factor. *A*, SEB-induced T cell proliferation in PBMC depleted of CD25<sup>+</sup> cells was assessed by CFSE proliferation assay. T<sub>R</sub><sup>adapt</sup> cells from autologous donors were added directly to the cultures or to the Transwell inserts. Data from one representative experiment are shown ( $n = 3$ ). *B*, IFN- $\gamma$  expression in purified CD4<sup>+</sup> T cells incubated in medium recovered from unstimulated (control) and stimulated T<sub>R</sub><sup>adapt</sup> cells. The medium was replenished once during the incubation period with culture supernatant from T<sub>R</sub><sup>adapt</sup> cells to limit the possible degradation of humoral factors present in the medium during the assay period.

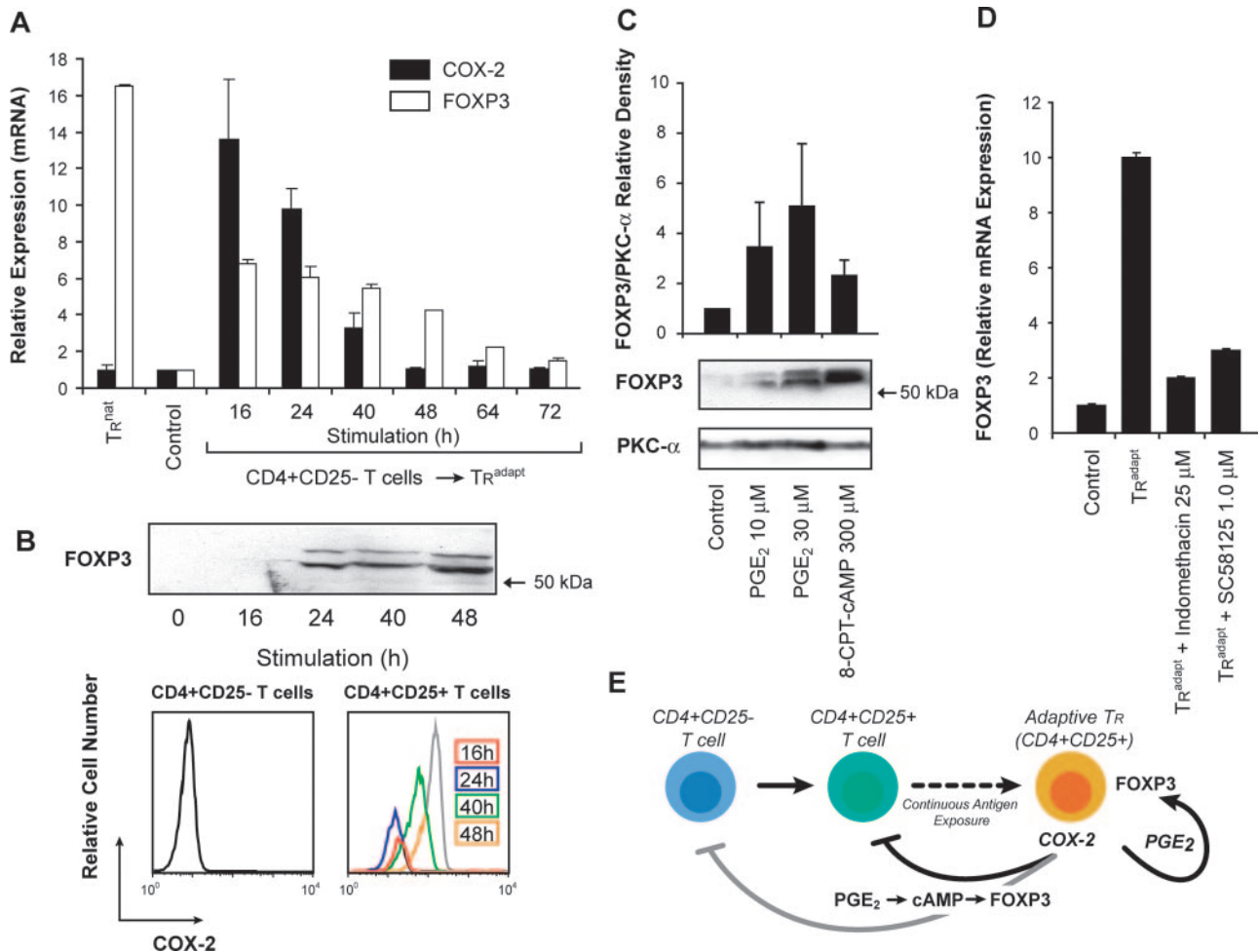


**FIGURE 6.** COX inhibitors and EP2 and EP4 receptor antagonists reverse  $T_R^{\text{adapt}}$  cell-mediated suppression of T cell effector function. **A**, SEB-induced T cell proliferation in PBMC depleted of CD25<sup>+</sup> cells was assessed by CFSE proliferation assay.  $T_R^{\text{adapt}}$  cells from autologous donors were added to the cultures as indicated. Cells were preincubated with the COX inhibitor indomethacin or the COX-2 inhibitor SC58125 for 24 h, or a combination of the EP2 (AH6809) and EP4 (AH2384) receptor antagonists for 1 h and during activation. **B**, Anti-CD3/anti-CD28-induced proliferation of CD4<sup>+</sup>CD25<sup>-</sup> T cells was assessed by [<sup>3</sup>H]thymidine incorporation.  $T_R^{\text{adapt}}$  cells from autologous donors were added to the cultures as indicated and treated with the COX-2 inhibitor SC58125 or a combination of the EP2 and EP4 receptor antagonists as in **A**. **C**, The frequency of SEB-induced IFN- $\gamma$  expressing CD4<sup>+</sup> T cells was assessed by intracellular flow cytometry in PBMC depleted of CD25<sup>+</sup> cells.  $T_R^{\text{adapt}}$  cells from the autologous donor were added to the cultures as indicated. Indomethacin, SC58125, anti-IL-10, and anti-TGF- $\beta$  (subtypes 1, 2, 3) were added before (preincubation times: 24 h for COX inhibitors, 1 h for Abs) and during activation with SEB. Mean  $\pm$  SEM.

cells are generated by parallel processes taking place at different anatomical sites and share basic biological properties is a fundamental question that remains to be elucidated.  $T_R^{\text{adapt}}$  cells appear to represent a more heterogeneous subpopulation than  $T_R^{\text{nat}}$  cells, although this may relate to different experimental procedures and model systems.  $T_R^{\text{adapt}}$  cells include both IL-10-producing  $T_R1$  cells and TGF- $\beta$ -producing Th3 cells (4). FOXP3 expression is essential for the immunosuppressive activity of  $T_R^{\text{nat}}$  cells (13–15). Whereas the suppressive activity of  $T_R1$  cells is independent of FOXP3 expression (41),  $T_R^{\text{adapt}}$  cells in other model systems express FOXP3 and appear to share important biological properties with  $T_R^{\text{nat}}$  cells such as IL-10/TGF- $\beta$ -independent immunosuppression (16–18, 42, 43). This is consistent with our data demonstrating that the CD4<sup>+</sup>CD25<sup>-</sup> T cells started to express FOXP3 during the differentiation to  $T_R^{\text{adapt}}$  cells and that the suppressive activity was not reversed by neutralizing Abs to IL-10 or TGF- $\beta$ . Although expression of FOXP3 is closely associated with the suppressive immune activity of both  $T_R^{\text{nat}}$  cells and  $T_R^{\text{adapt}}$  cells, the mechanism of suppression is not known.

PGE<sub>2</sub> has a strong inhibitory effect on mature T cells. Furthermore, recent work has demonstrated that PGE<sub>2</sub> can increase the immunosuppressive potential of  $T_R$  cells and convert CD4<sup>+</sup>CD25<sup>-</sup> T cells into T cells with an immunosuppressive phenotype by induction of FOXP3 (36, 37). These data suggest that PGE<sub>2</sub> is able to change the phenotypic characteristics of T cells engaged in an ongoing immune response. However, it has not previously been demonstrated that  $T_R^{\text{adapt}}$  cells express COX-2 and is a source of PGE<sub>2</sub>. The conversion of CD4<sup>+</sup>CD25<sup>-</sup> T cells into COX-2-expressing  $T_R^{\text{adapt}}$  cells may reflect the phenotypic change that occurs when an immune response develops into a chronic inflammatory process. However, it is not clear whether  $T_R^{\text{adapt}}$  cells arise directly from naive CD4<sup>+</sup>CD25<sup>-</sup> cells or by a linear differentiation pathway through an intermediate effector stage (Fig. 7E and Ref. 10).

In addition to the paracrine suppressive effects on responding effector CD4<sup>+</sup> T cells, PGE<sub>2</sub> has autocrine effects as evident from increased levels of cAMP in the  $T_R^{\text{adapt}}$  cells. Thus, PGE<sub>2</sub> acts as a humoral factor, and both the immunosuppressive effect and the



**FIGURE 7.** Expression of FOXP3 in  $T_R^{\text{adapt}}$  cells is induced by superantigen and  $PGE_2$  and suppressed by COX inhibitors. *A* and *B*, PBMC depleted of  $CD25^+$  T cells were stimulated with SEB for indicated time periods.  $CD4^+CD25^+$  T cells were purified and analyzed at each time point by real-time quantitative PCR using gene-specific primers for COX-2, FOXP3, and  $\beta$ -actin (*A*) and expression of FOXP3 and COX-2 protein by Western blot and intracellular flow cytometry (*B*), respectively. In real-time quantitative PCR, relative gene expression was determined by normalizing COX-2 and FOXP3 expression of each sample to  $\beta$ -actin. Mean  $\pm$  SEM. *C*, Western blot analysis (*bottom panel*) of FOXP3 expression in  $CD4^+CD25^-$  T cells cultured for 2 days in the absence or presence of  $PGE_2$  or the cAMP analog 8-CPT-cAMP. The protein levels of PKC- $\alpha$  were used as loading control. Densitometric analysis of FOXP3 expression in Western blots was quantified by densitometric analysis and normalized to PKC- $\alpha$  levels (*top panel*; mean  $\pm$  SEM;  $n = 5$ ). *D*,  $CD4^+CD25^-$  T cells were stimulated by anti-CD3/anti-CD28 for 3 days in the absence or presence of the COX inhibitor indomethacin or the COX-2-specific inhibitor SC58125,  $CD4^+CD25^+$  T cells were purified, and FOXP3 mRNA levels were analyzed by real-time PCR as in *A*. *E*, Schematic model that depicts the autocrine and paracrine effects of  $PGE_2$  secreted from  $T_R^{\text{adapt}}$  cells.  $PGE_2$  secreted from  $T_R^{\text{adapt}}$  cells suppress the immune activity of  $CD4^+CD25^+$  effector T cells. In addition,  $PGE_2$  leads to induction of FOXP3 expression in all three subsets of  $CD4^+$  T cells in an autocrine and paracrine manner.

increase in intracellular cAMP were reversible with COX inhibitors and EP-receptor antagonists. The paracrine effect of  $PGE_2$  was also evident from experiments in which supernatants transferred from  $T_R^{\text{adapt}}$  cells induced cAMP production and suppressed IFN- $\gamma$  production in  $CD4^+$  effector T cells, and in Transwell experiments in which  $T_R^{\text{adapt}}$  cells suppressed T cell proliferation in a contact-independent manner.

Although IL-10 and TGF- $\beta$  were not responsible for the immunosuppressive effect of  $T_R^{\text{adapt}}$  cells in this experimental system, IL-10 and TGF- $\beta$  play important roles in the differentiation and function of  $T_R$  cells and may also act as immunosuppressive factors. TGF- $\beta$  is important for the differentiation from naive  $CD4^+$  T cells to FOXP3 $^+$   $T_R^{\text{adapt}}$  cells (16), and coculture of  $T_R^{\text{nat}}$  cells with  $CD4^+$  T cells leads to generation of suppressive  $CD4^+$  T cells that inhibit in a TGF- $\beta$ - and/or IL-10-dependent manner in vitro (44, 45). Furthermore, IL-10 produced by  $T_R^{\text{nat}}$  cells is important for the establishment of long-term immunity in certain par-

asite infections by suppressing effector T cells and thereby preventing sterilizing immunity and loss of immunity to reinfection (46). Thus, IL-10 and TGF- $\beta$  may play multiple roles in the differentiation and function of  $T_R^{\text{adapt}}$  cells as well as  $T_R^{\text{nat}}$  cells. The effect of  $PGE_2$  on IL-10 and TGF- $\beta$  expression and secretion in  $T_R^{\text{adapt}}$  cells needs further investigation. Furthermore, yet unknown factors expressed by  $T_R^{\text{adapt}}$  cells may contribute to their regulatory function.

The near identical kinetics of regulation of FOXP3 and COX-2 mRNA and protein expression was intriguing, and we hypothesized and found that FOXP3 expression was induced by COX-2 and subsequent autocrine effects of  $PGE_2$ . This is in line with recent observations showing that  $PGE_2$  produced from COX-2-expressing cancer cells is involved in regulation of FOXP3 expression (36, 37, 47). Thus, FOXP3 expression appears to be a consequence of the inhibitory mechanism that operates in these cells, rather than a cause of suppressive action, and this is subject



to further investigation. This finding distinguishes T<sub>R</sub><sup>adapt</sup> cells in this system from T<sub>R</sub><sup>nat</sup> cells, where FOXP3 is essential for the immunosuppressive capacity.

In conclusion, our data demonstrate a novel mechanism of T<sub>R</sub><sup>adapt</sup> cell-mediated immune suppression that depends on COX-2 expression and secretion of PGE<sub>2</sub>. PGE<sub>2</sub> acts in a paracrine manner to inhibit effector T cell responses, and has autocrine effects on T<sub>R</sub><sup>adapt</sup> cells that lead to an increase in the level of intracellular cAMP and up-regulation of FOXP3 expression.

## Disclosures

The authors have no financial conflict of interest.

## References

- Powrie, F., R. Correa-Oliveira, S. Mauze, and R. L. Coffman. 1994. Regulatory interactions between CD45RB<sup>high</sup> and CD45RB<sup>low</sup> CD4<sup>+</sup> T cells are important for the balance between protective and pathogenic cell-mediated immunity. *J. Exp. Med.* 179: 589–600.
- Sakaguchi, S. 2000. Regulatory T cells: key controllers of immunologic self-tolerance. *Cell* 101: 455–458.
- Shevach, E. M. 2002. CD4<sup>+</sup>CD25<sup>+</sup> suppressor T cells: more questions than answers. *Nat. Rev. Immunol.* 2: 389–400.
- Mills, K. H. 2004. Regulatory T cells: friend or foe in immunity to infection? *Nat. Rev. Immunol.* 4: 841–855.
- Thornton, A. M., and E. M. Shevach. 1998. CD4<sup>+</sup>CD25<sup>+</sup> immunoregulatory T cells suppress polyclonal T cell activation in vitro by inhibiting interleukin 2 production. *J. Exp. Med.* 188: 287–296.
- Bluestone, J. A., and A. K. Abbas. 2003. Natural versus adaptive regulatory T cells. *Nat. Rev. Immunol.* 3: 253–257.
- Jordan, M. S., A. Boesteanu, A. J. Reed, A. L. Petrone, A. E. Hohenbeck, M. A. Lerman, A. Naji, and A. J. Caton. 2001. Thymic selection of CD4<sup>+</sup>CD25<sup>+</sup> regulatory T cells induced by an agonist self-peptide. *Nat. Immunol.* 2: 301–306.
- Thornton, A. M., and E. M. Shevach. 2000. Suppressor effector function of CD4<sup>+</sup>CD25<sup>+</sup> immunoregulatory T cells is antigen nonspecific. *J. Immunol.* 164: 183–190.
- Chen, Y., V. K. Kuchroo, J. Inobe, D. A. Hafler, and H. L. Weiner. 1994. Regulatory T cell clones induced by oral tolerance: suppression of autoimmune encephalomyelitis. *Science* 265: 1237–1240.
- Knoechel, B., J. Lohr, E. Kahn, J. A. Bluestone, and A. K. Abbas. 2005. Sequential development of interleukin 2-dependent effector and regulatory T cells in response to endogenous systemic antigen. *J. Exp. Med.* 202: 1375–1386.
- McGuirk, P., C. McCann, and K. H. Mills. 2002. Pathogen-specific T regulatory 1 cells induced in the respiratory tract by a bacterial molecule that stimulates interleukin 10 production by dendritic cells: a novel strategy for evasion of protective T helper type 1 responses by *Bordetella pertussis*. *J. Exp. Med.* 195: 221–231.
- Yamaguchi, S., J. D. Gray, S. Hashimoto, and D. A. Horwitz. 2001. A role for TGF- $\beta$  in the generation and expansion of CD4<sup>+</sup>CD25<sup>+</sup> regulatory T cells from human peripheral blood. *J. Immunol.* 166: 7282–7289.
- Fontenot, J. D., M. A. Gavin, and A. Y. Rudensky. 2003. Foxp3 programs the development and function of CD4<sup>+</sup>CD25<sup>+</sup> regulatory T cells. *Nat. Immunol.* 4: 330–336.
- Hori, S., T. Nomura, and S. Sakaguchi. 2003. Control of regulatory T cell development by the transcription factor Foxp3. *Science* 299: 1057–1061.
- Khattri, R., T. Cox, S. A. Yasayko, and F. Ramsdell. 2003. An essential role for Scurfin in CD4<sup>+</sup>CD25<sup>+</sup> T regulatory cells. *Nat. Immunol.* 4: 337–342.
- Chen, W., W. Jin, N. Hardegen, K. J. Lei, L. Li, N. Marinov, G. McGrady, and S. M. Wahl. 2003. Conversion of peripheral CD4<sup>+</sup>CD25<sup>-</sup> naive T cells to CD4<sup>+</sup>CD25<sup>+</sup> regulatory T cells by TGF- $\beta$  induction of transcription factor Foxp3. *J. Exp. Med.* 198: 1875–1886.
- Curto de Lafaille, M. A., A. C. Lino, N. Kutchukhidze, and J. J. Lafaille. 2004. CD25<sup>-</sup> T cells generate CD25<sup>+</sup>Foxp3<sup>+</sup> regulatory T cells by peripheral expansion. *J. Immunol.* 173: 7259–7268.
- Walker, M. R., D. J. Kasprowitz, V. H. Gersuk, A. Benard, L. M. Van, J. H. Buckner, and S. F. Ziegler. 2003. Induction of FoxP3 and acquisition of T regulatory activity by stimulated human CD4<sup>+</sup>CD25<sup>-</sup> T cells. *J. Clin. Invest.* 112: 1437–1443.
- Cobbold, S. P., R. Castejon, E. Adams, D. Zelenika, L. Graca, S. Humm, and H. Waldmann. 2004. Induction of foxP3<sup>+</sup> regulatory T cells in the periphery of T cell receptor transgenic mice tolerized to transplants. *J. Immunol.* 172: 6003–6010.
- Walker, M. R., B. D. Carson, G. T. Nepom, S. F. Ziegler, and J. H. Buckner. 2005. De novo generation of antigen-specific CD4<sup>+</sup>CD25<sup>+</sup> regulatory T cells from human CD4<sup>+</sup>CD25<sup>-</sup> cells. *Proc. Natl. Acad. Sci. USA* 102: 4103–4108.
- Tilley, S. L., T. M. Coffman, and B. H. Koller. 2001. Mixed messages: modulation of inflammation and immune responses by prostaglandins and thromboxanes. *J. Clin. Invest.* 108: 15–23.
- Nataraj, C., D. W. Thomas, S. L. Tilley, M. T. Nguyen, R. Mannon, B. H. Koller, and T. M. Coffman. 2001. Receptors for prostaglandin E<sub>2</sub> that regulate cellular immune responses in the mouse. *J. Clin. Invest.* 108: 1229–1235.
- Kabashima, K., T. Saji, T. Murata, M. Nagamachi, T. Matsuoka, E. Segi, K. Tsuboi, Y. Sugimoto, T. Kobayashi, Y. Miyachi, et al. 2002. The prostaglandin receptor EP4 suppresses colitis, mucosal damage and CD4 cell activation in the gut. *J. Clin. Invest.* 109: 883–893.
- Goodwin, J. S., A. D. Bankhurst, and R. P. Messner. 1977. Suppression of human T-cell mitogenesis by prostaglandin: existence of a prostaglandin-producing suppressor cell. *J. Exp. Med.* 146: 1719–1734.
- Aandahl, E. M., W. J. Moretto, P. A. Haslett, T. Vang, T. Bryn, K. Tasken, and D. F. Nixon. 2002. Inhibition of antigen-specific T cell proliferation and cytokine production by protein kinase A type I. *J. Immunol.* 169: 802–808.
- Breyer, R. M., C. K. Bagdassarian, S. A. Myers, and M. D. Breyer. 2001. Prostanoid receptors: subtypes and signaling. *Annu. Rev. Pharmacol. Toxicol.* 41: 661–690.
- Torgersen, K. M., T. Vang, H. Abrahamsen, S. Yaqub, V. Horejsi, B. Schraven, B. Rolstad, T. Mustelin, and K. Tasken. 2001. Release from tonic inhibition of T cell activation through transient displacement of C-terminal Src kinase (Csk) from lipid rafts. *J. Biol. Chem.* 276: 29313–29318.
- Vang, T., K. M. Torgersen, V. Sundvold, M. Saxena, F. O. Levy, B. S. Skalhogg, V. Hansson, T. Mustelin, and K. Tasken. 2001. Activation of the COOH-terminal Src kinase (Csk) by cAMP-dependent protein kinase inhibits signaling through the T cell receptor. *J. Exp. Med.* 193: 497–507.
- Vang, T., H. Abrahamsen, S. Myklebust, V. Horejsi, and K. Tasken. 2003. Combined spatial and enzymatic regulation of Csk by cAMP and protein kinase A inhibits T cell receptor signaling. *J. Biol. Chem.* 278: 17597–17600.
- Rahmouni, S., E. M. Aandahl, B. Nayjib, M. Zeddou, S. Giannini, M. Verlaet, R. Greimers, J. Boniver, K. Tasken, and M. Moutschen. 2004. Cyclo-oxygenase type 2-dependent prostaglandin E<sub>2</sub> secretion is involved in retrovirus-induced T-cell dysfunction in mice. *Biochem. J.* 384: 469–476.
- Strom, T. B., and C. B. Carpenter. 1983. Prostaglandin as an effective antirejection therapy in rat renal allograft recipients. *Transplantation* 35: 279–281.
- Kamei, T., M. P. Callery, and M. W. Flye. 1991. Intra-graft delivery of 16, 16-dimethyl PGE<sub>2</sub> induces donor-specific tolerance in rat cardiac allograft recipients. *Transplantation* 51: 242–246.
- Moran, M., M. F. Mozes, M. S. Maddux, S. Veremis, C. Bartkus, B. Ketel, R. Pollak, C. Wallemark, and O. Jonasson. 1990. Prevention of acute graft rejection by the prostaglandin E<sub>1</sub> analogue misoprostol in renal-transplant recipients treated with cyclosporine and prednisone. *N. Engl. J. Med.* 322: 1183–1188.
- Simmons, D. L., R. M. Botting, and T. Hla. 2004. Cyclooxygenase isozymes: the biology of prostaglandin synthesis and inhibition. *Pharmacol. Rev.* 56: 387–437.
- Pablos, J. L., B. Santiago, P. E. Carreira, M. Galindo, and J. J. Gomez-Reino. 1999. Cyclooxygenase-1 and -2 are expressed by human T cells. *Clin. Exp. Immunol.* 115: 86–90.
- Baratelli, F., Y. Lin, L. Zhu, S. C. Yang, N. Heuze-Vourc'h, G. Zeng, K. Reckamp, M. Dohadwala, S. Sharma, and S. M. Dubinett. 2005. Prostaglandin E<sub>2</sub> induces FOXP3 gene expression and T regulatory cell function in human CD4<sup>+</sup> T cells. *J. Immunol.* 175: 1483–1490.
- Sharma, S., S. C. Yang, L. Zhu, K. Reckamp, B. Gardner, F. Baratelli, M. Huang, R. K. Batra, and S. M. Dubinett. 2005. Tumor cyclooxygenase-2/prostaglandin E<sub>2</sub>-dependent promotion of FOXP3 expression and CD4<sup>+</sup>CD25<sup>+</sup> T regulatory cell activities in lung cancer. *Cancer Res.* 65: 5211–5220.
- Groux, H., A. O'Garra, M. Bigler, M. Rouleau, S. Antonenko, J. E. de Vries, and M. G. Roncarolo. 1997. A CD4<sup>+</sup> T-cell subset inhibits antigen-specific T-cell responses and prevents colitis. *Nature* 389: 737–742.
- Barrat, F. J., D. J. Cua, A. Boonstra, D. F. Richards, C. Crain, H. F. Savelkoul, R. de Waal-Malefyt, R. L. Coffman, C. M. Hawrylycz, and A. O'Garra. 2002. In vitro generation of interleukin 10-producing regulatory CD4<sup>+</sup> T cells is induced by immunosuppressive drugs and inhibited by T helper type 1 (Th1)- and Th2-inducing cytokines. *J. Exp. Med.* 195: 603–616.
- Aandahl, E. M., J. Michaelsson, W. J. Moretto, F. M. Hecht, and D. F. Nixon. 2004. Human CD4<sup>+</sup>CD25<sup>+</sup> regulatory T cells control T-cell responses to human immunodeficiency virus and cytomegalovirus antigens. *J. Virol.* 78: 2454–2459.
- Vieira, P. L., J. R. Christensen, S. Minaee, E. J. O'Neill, F. J. Barrat, A. Boonstra, T. Barthlott, B. Stockinger, D. C. Wraith, and A. O'Garra. 2004. IL-10-secreting regulatory T cells do not express Foxp3 but have comparable regulatory function to naturally occurring CD4<sup>+</sup>CD25<sup>+</sup> regulatory T cells. *J. Immunol.* 172: 5986–5993.
- Apostolou, I., and H. von Boehmer. 2004. In vivo instruction of suppressor commitment in naive T cells. *J. Exp. Med.* 199: 1401–1408.
- Liang, S., P. Alard, Y. Zhao, S. Parnell, S. L. Clark, and M. M. Kosiewicz. 2005. Conversion of CD4<sup>+</sup>CD25<sup>-</sup> cells into CD4<sup>+</sup>CD25<sup>+</sup> regulatory T cells in vivo requires B7 costimulation, but not the thymus. *J. Exp. Med.* 201: 127–137.
- Jonuleit, H., E. Schmitt, H. Kalkman, M. Stassen, J. Knop, and A. H. Enk. 2002. Infectious tolerance: human CD25<sup>+</sup> regulatory T cells convey suppressor activity to conventional CD4<sup>+</sup> T helper cells. *J. Exp. Med.* 196: 255–260.
- Dieckmann, D., C. H. Bruett, H. Ploettner, M. B. Lutz, and G. Schuler. 2002. Human CD4<sup>+</sup>CD25<sup>+</sup> regulatory, contact-dependent T cells induce interleukin 10-producing, contact-independent type 1-like regulatory T cells. *J. Exp. Med.* 196: 247–253.
- Belkaid, Y., C. A. Piccirillo, S. Mendez, E. M. Shevach, and D. L. Sacks. 2002. CD4<sup>+</sup>CD25<sup>+</sup> regulatory T cells control *Leishmania major* persistence and immunity. *Nature* 420: 502–507.
- Akasaki, Y., G. Liu, N. H. Chung, M. Ehteshami, K. L. Black, and J. S. Yu. 2004. Induction of a CD4<sup>+</sup> T regulatory type 1 response by cyclooxygenase-2-overexpressing glioma. *J. Immunol.* 173: 4352–4359.