



Imation LOCK User Manual

**Security Application Program
V1.08 - B**

Table of Contents

A.	Introduction	2
B.	General Description.....	2
C.	Features	2
D.	Before Using the Security Application Program – Imation LOCK.....	2
E.	Introduction to Imation LOCK.....	4
	E1. Main Screen.....	4
	E2. Set Password / Change Password.....	4
	E3. Disable Password	7
	E4. Unlock Device	8
	E5. Configure Partition Sizes.....	10
F.	Checking the Security Application Program – LOCK’s Version	13
G.	Running the Program As Privileged User	14
H.	FAQ – Frequently Asked Questions	14

A. Introduction

- This Imation LOCK security application program applies to *secure series of products only*. Usage of this AP on other products is prohibited.
- This security application program – Imation LOCK is designed for Windows base operating system only.
- **Windows 98 users**, please install driver first before plugging in your device and running this application program.
- **Windows 2000 users**, please upgrade to *Service Pack 3 (SP3)* or *Service Pack 4 (SP4)* first before using this security product and application program.
- Plug in *ONE* device at a time. **DO NOT** plug in two or more secure device at the same time when running this security application program –Imation LOCK.

B. General Description

This product is a USB Flash Memory Storage Device with a security function. This security function provides you with a high level of privacy for your personal data.

This device allows you to set up your own password (with a maximum of 16 characters). It also allows you to adjust the public and secure partitions.

The Imation LOCK provides users with convenience and privacy, as well as high security data on your USB flash memory storage device.

C. Features

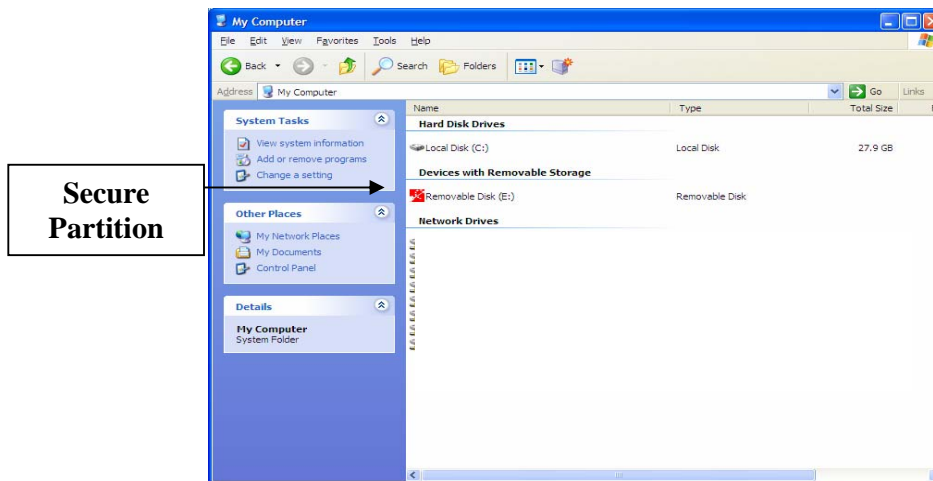
- (a) **Disk Free** - program is stored on the device, so you don't have to carry the program on a CD-ROM or floppy disk. Latest upgrades can be found at www.imation.com
- (b) **Easy to Operate** – program is pictorial with easy to understand icons and friendly descriptions.
- (c) **Customized Password** – users can choose their own personal password (1 to 16 characters in length).
- (d) **Fixed Password Retry** – users are allowed to retype their password 5 times, when typing in the wrong password for the sixth time, the drive will be re-formatted to protect the data from being exposed to others.
- (e) **Friendly Reminder** – password hint function is available in case the user forgets his/her password. Users can set up their own password hint with a message up to 32 characters long.
- (f) **Multi Language Support** – supports English, Japanese, Simplify Chinese, Traditional Chinese language interface, will auto detect the language used by operating system. Default interface is set to English.

D. Before Using the Security Application Program – Imation LOCK

Upon plugging the device into a USB port, your operating system should recognize the device and display a “Removable Disk” icon. This is the “Public” partition. The security application program – Imation LOCK will be stored in this area as well as the “Secure” partition area.

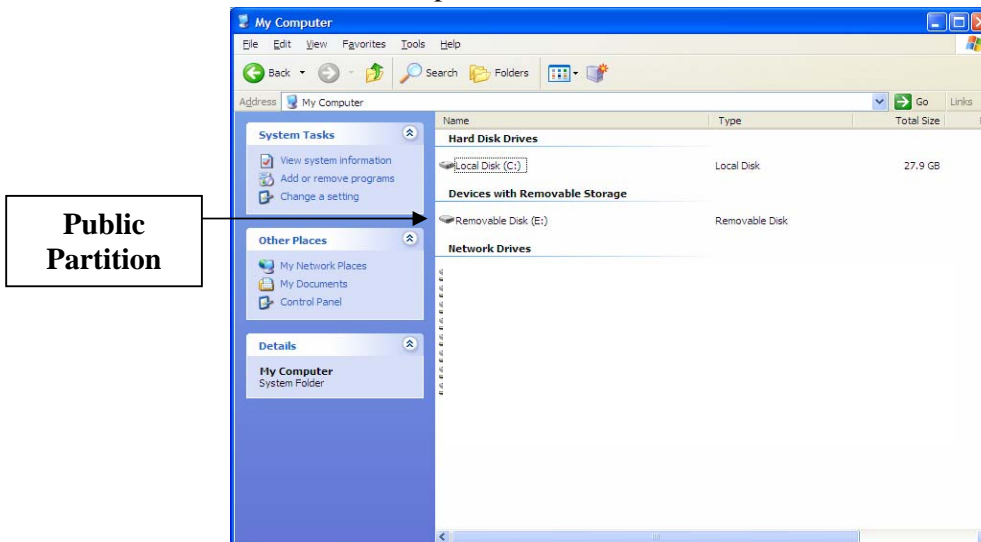
Partition 1 – Secure Area

The secure area is password protected and can be accessed by typing in the correct password only. If *NO* password exists, you can view either of the 2 partitions, but no partition is secure.



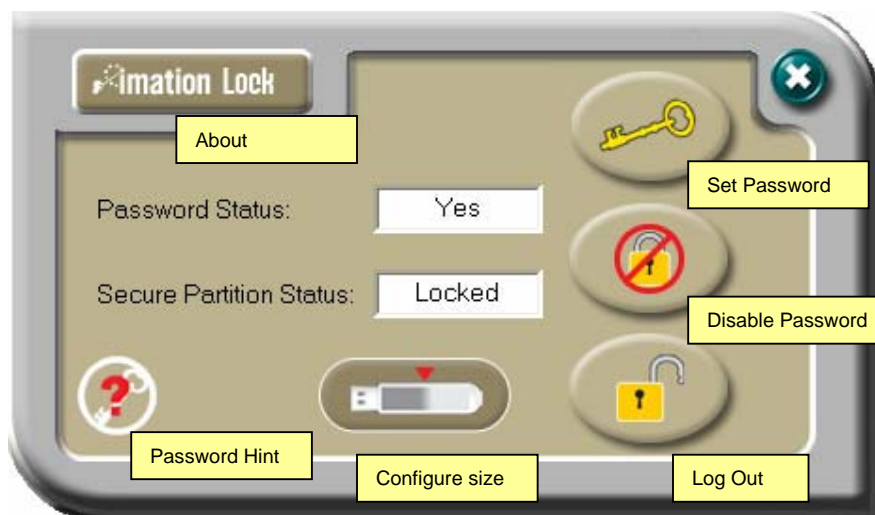
Partition 2 – Public Area

This area is “Always Open” to all users using the device. Users can read / write data to this area any time. The security application program – Imation LOCK is resident in this partition. Password security will only apply to the secure partition and will not affect this partition.



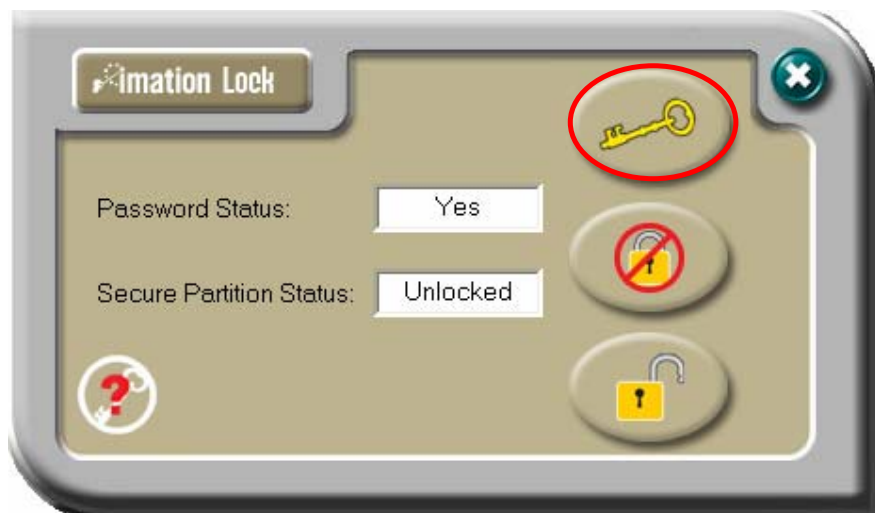
E. Introduction to Imation LOCK

E1. Main Screen



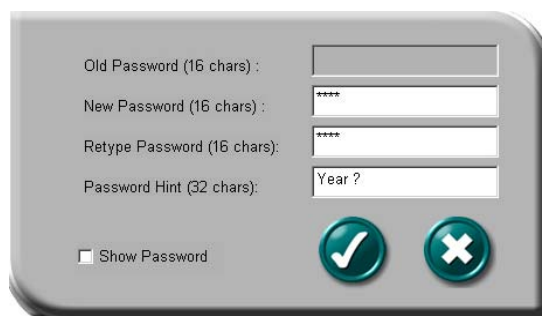
Move the mouse cursor over the icons, and the description of the button will appear within seconds.

E2. Set Password / Change Password



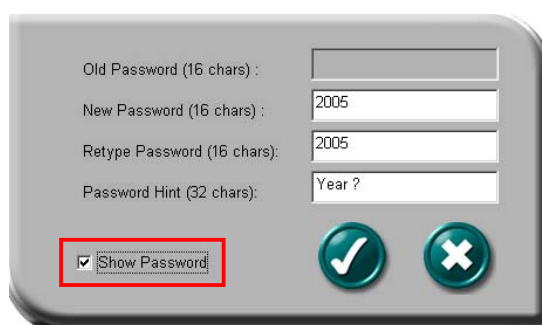
Press the top right hand button to setup or change your password.


Setup Password : If no password exist, simply enter a password of your choice up to 16 characters in length. You may also enter a password hint (maximum 32 characters including spaces) to remind you of your password in the event that you forget it.

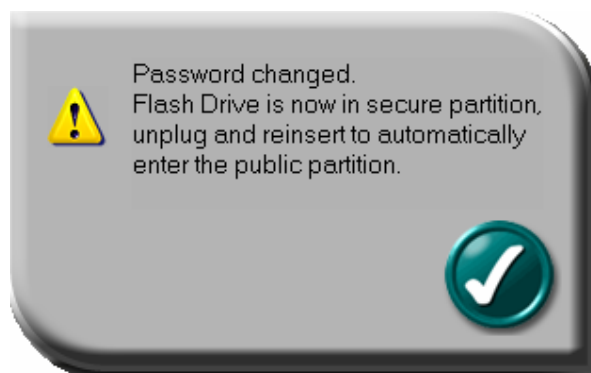



Note: You can only type in English letters and numbers.

Click the “Show Password” box to view what you are typing.



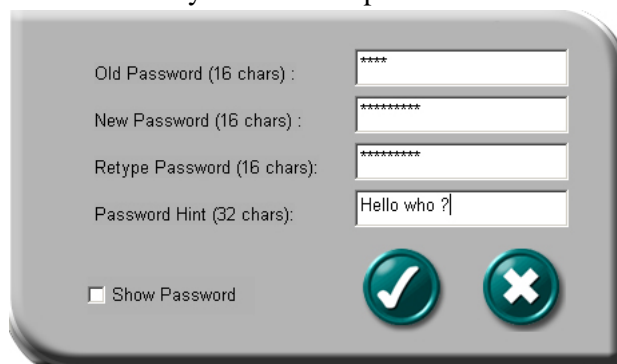
When ready, press  (apply) to save the password and password hint. You will see the following messages telling you that the password has been changed. At this point the device will be locked automatically when you remove it from the USB port or if there is a suspension in power.



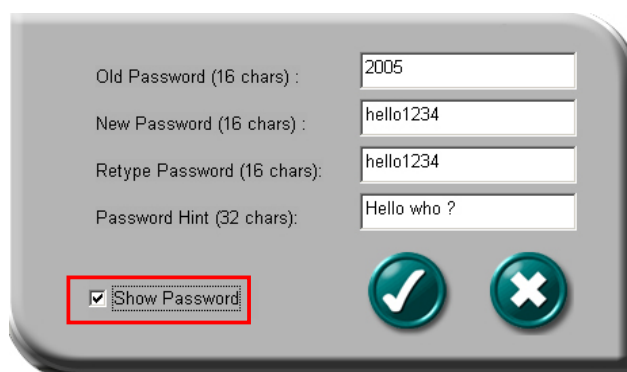
Press  (cancel) to cancel the set up procedure if you do not wish to save the


password and password hint.

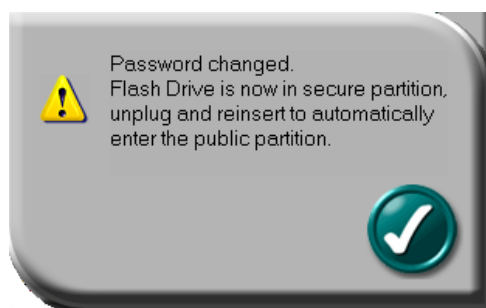
Change Password : If a password exists, before you make any changes you will need to enter the current password. Enter the current password, and new password of your choice. You may also edit the password hint at the same time.




Click the “Show Password” box if you want to see what you are typing.



Press  (apply) to save changes to the password and password hint. You will see the following messages telling you that the password has been changed. At this point the device will be locked automatically when you remove it from the USB port or if there is a suspension in power.




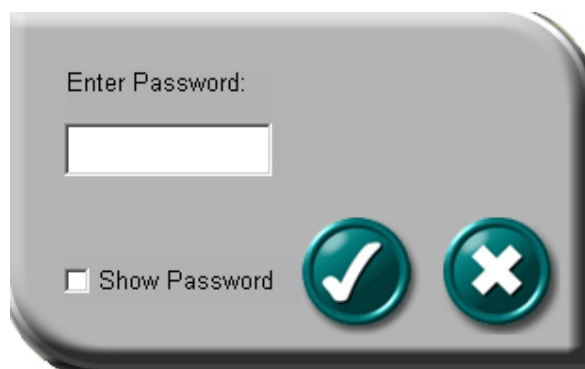
Press  (cancel) to cancel the change password procedure if you want to keep current password and password hint.

E3. Disable Password

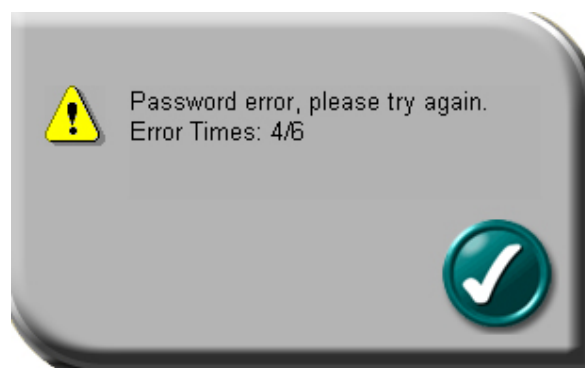


Press the middle button on the right to “Disable” (remove) the password.

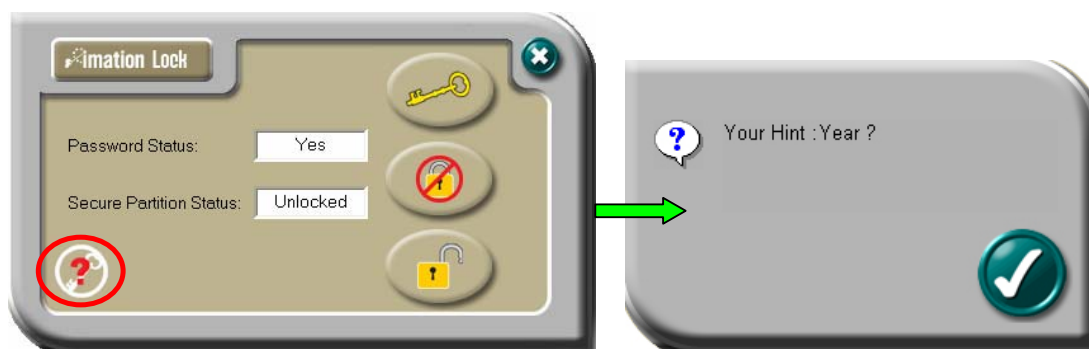
You will be prompted to enter your password. Press  (cancel) to cancel if you do not want to remove your current password and password hint.



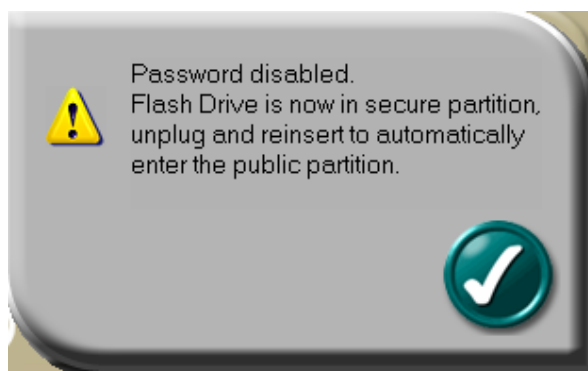
You have six chances to enter the password correctly, before the secure partition of your device gets re-formatted.



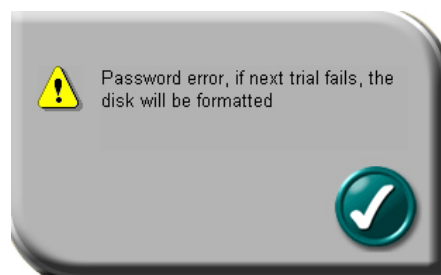
If you have forgotten your password, click on the password hint to remind you of your password.



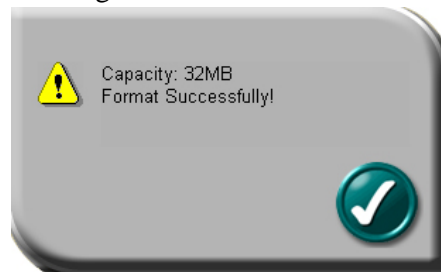
Enter the correct password and your password will be disabled (removed).



You will be reminded with the following message if you have typed in the wrong password for the fifth time.



If you typed in the wrong password for the sixth time, your device will be re-formatted automatically and all data in the secure partition will be erased from the device. The capacity of the secure partition will appear on the screen after successfully re-formatting.




E4. Unlock Device

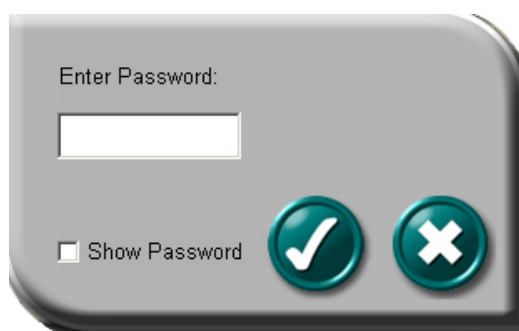
If you have setup a password, when you remove your device from the USB port

(or if there is a suspension in power), the secure partition 1 of your device gets locked automatically. You will not be able to access this partition 1, nor read or write data to partition 1 until you unlock it.

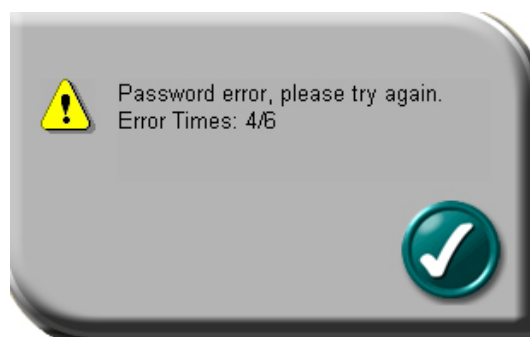
Press the bottom button on the right to “Unlock” the partition temporarily.



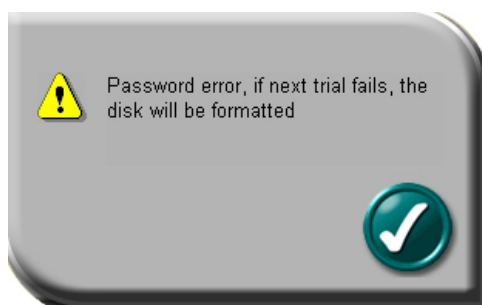
You will be prompted to enter your password. Press  (cancel) to cancel if you do not want unlock partition 1.



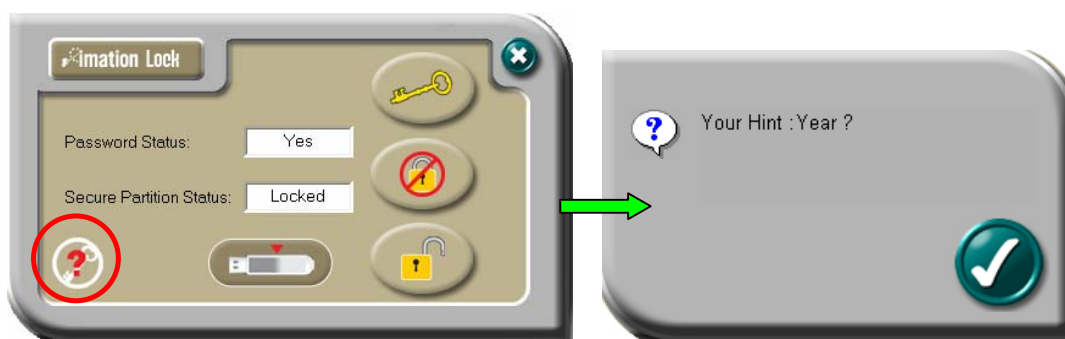
You have six chances to enter the password correctly, before the secure partition of your device gets re-formatted.



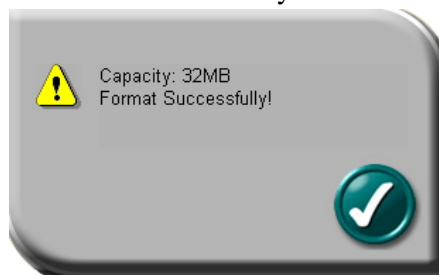
You will be reminded with the following message if you have typed in the wrong password for the fifth time.



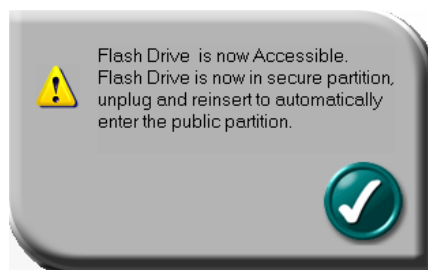
If you have forgotten your password, click on the password hint to remind you of your password.



If you typed in the wrong password for the sixth time, the secure partition of your device will be re-formatted automatically.

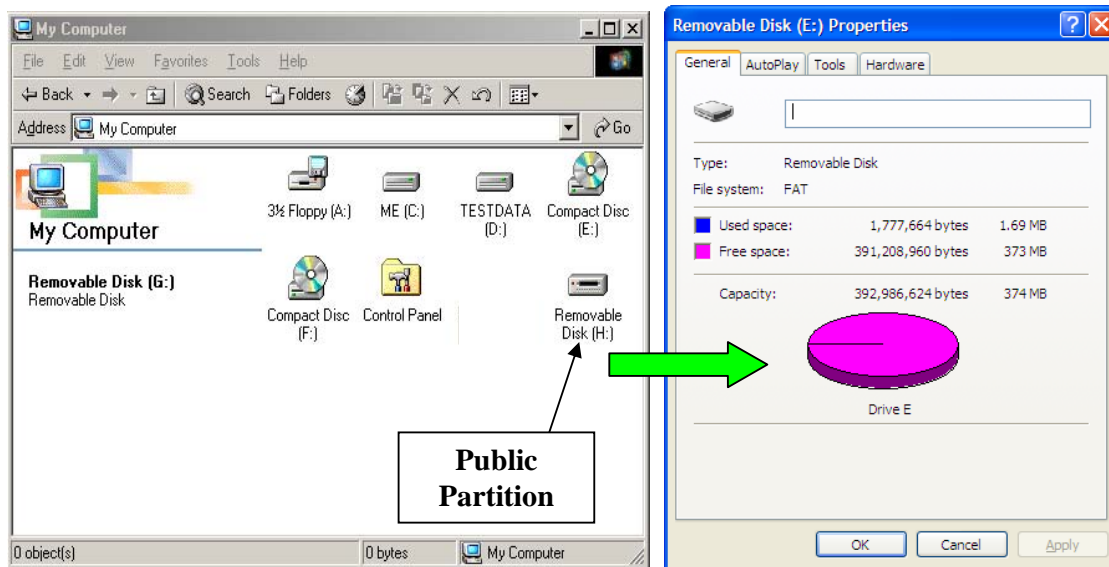


Once you have entered the correct password, the Secure partition 1 will be available until you remove your device from the USB port or if there is a suspension in power. When the Secure partition 1 is unlocked, you can read or write data to the partition.



E5. Configure Partition Sizes

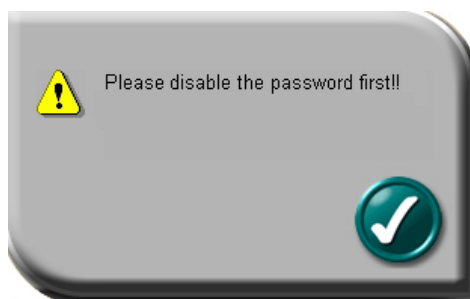
You can change the sizes of the two partitions (public and secure).

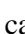



Press the bottom center button of the Imation LOCK program to resize public and secure partition areas.

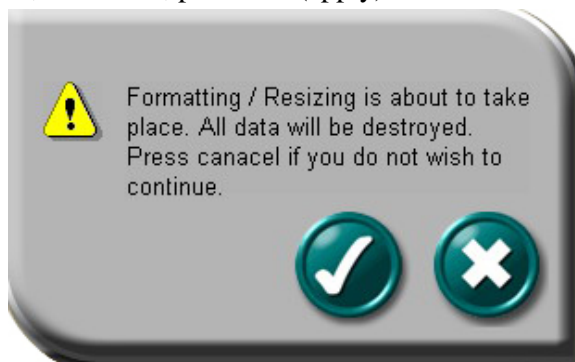


You need to “Disable” your password first before you can use this “Configure Size” (resizing) function if you have already setup a password. Follow section E3 of this manual to disable your password. It may be necessary to remove and plug your device in again after disabling the password.

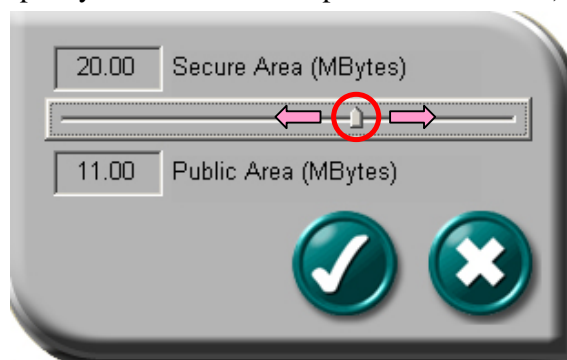




A warning message will show, telling you that data will be destroyed. If you have not yet backed up your data. Press  (cancel) to cancel the operation and back up

your data first; otherwise, press  (apply) to continue.

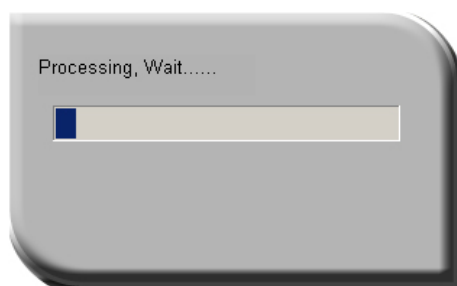


Move the pointer to the left or right to change the size of the public and secure area (minimum capacity that can be set for public area is 2MB).



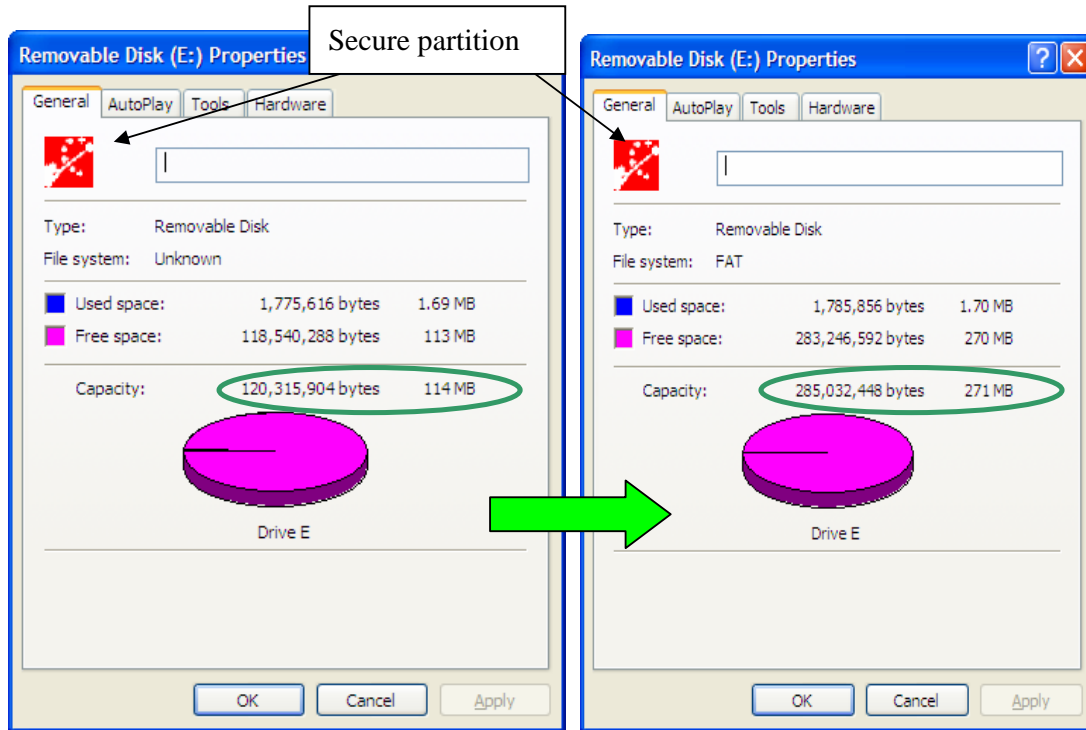
Press  (cancel) to cancel the operation if you do not want to change the current public and secure area; otherwise, press  (apply) to continue.

Formatting will then take place. Please wait until the "Formatting Completed" message appears.



After configuring (resizing & formatting) your USB device, please remember to remove it from the USB port and re-plug in again before using it.

Verify the change in capacity sizes of each partition by right clicking the drive icon and choosing properties. The secure Partition is shown in this example.



Before Configure Size

After Configure Size

NB : After configuring (resizing) is completed all data will be erased. The security application program will be restored in the public area automatically.

F. Checking the Security Application Program – LOCK’s Version

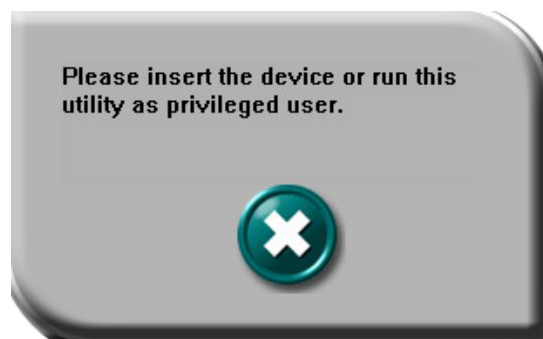
It will be necessary to know the revision number if you need to upgrade to a newer version of the software or if you are having trouble using the software and need help from our technical staff.

Simply press the top left hand button and the version will be displayed.



G. Running the Program As Privileged User

Some users may see this following screen.



Check and make sure that you have plugged in your device and your Windows operating system did recognise your device. Otherwise, please check FAQ Q3 for more detail.

H. FAQ – Frequently Asked Questions

Q1 My Windows 98 cannot detect my device, what should I do ?

A1 Make sure you have installed the latest device driver for your device. If you have already done so, but Windows still cannot detect your device, please try the following:

- (1) Go to "Safe Mode" => "Device Manager"
- (2) [Remove any devices that are related to USB](#)
- (3) Remove any "Unknown devices"
- (4) Remove any devices which are not present on screen
- (5) Remove any devices that are related to your device
- (6) Restart machine
- (7) Install driver if necessary (download latest driver from website)
- (8) Restart your computer as requested and then plug in your device

Q2 My Windows ME / 2000 / XP cannot detect my device, what should I do ?

A2 Since there is no driver required for these operating systems the device uses the built-in driver (USB Mass Storage Class Driver) from these operating systems. If your operating system cannot find the device, it is very likely that the built-in driver files were missing or corrupted; please try to recover these files from a different computer or from the original Windows operating system CD.

Note: *Windows 2000 users, please upgrade to service pack 3 or later.*

Q3 When I run the LOCK program, it displays “Please insert the device or run this utility as privileged user”. What should I do ?

A3 This problem may occur in Windows 2000 or Windows XP, under the following two situations.

Situation 1 : You have forgotten to insert your device.

Situation 2 : The security application program – LOCK requires some security privileges in these Windows operating systems. If you are not the administrator of the computer these privileges may be restricted by the administrator. Please check with your IT or administrator of the computer to open up the privileges for you. (see following method)

When logged into the account affected, run GPEDIT.MSC from the run menu (If there is not enough access use the 'Run As' option). We now need to find the security policy "Devices: Allowed to eject removable NTFS media". It is located in Local Computer Policy >> Computer Configuration >> Windows Settings >> Security Settings >> Local Policy >> Security Options. You need to change the access from "Administrators and Power Users" over to "Administrators and Inter Active Users".